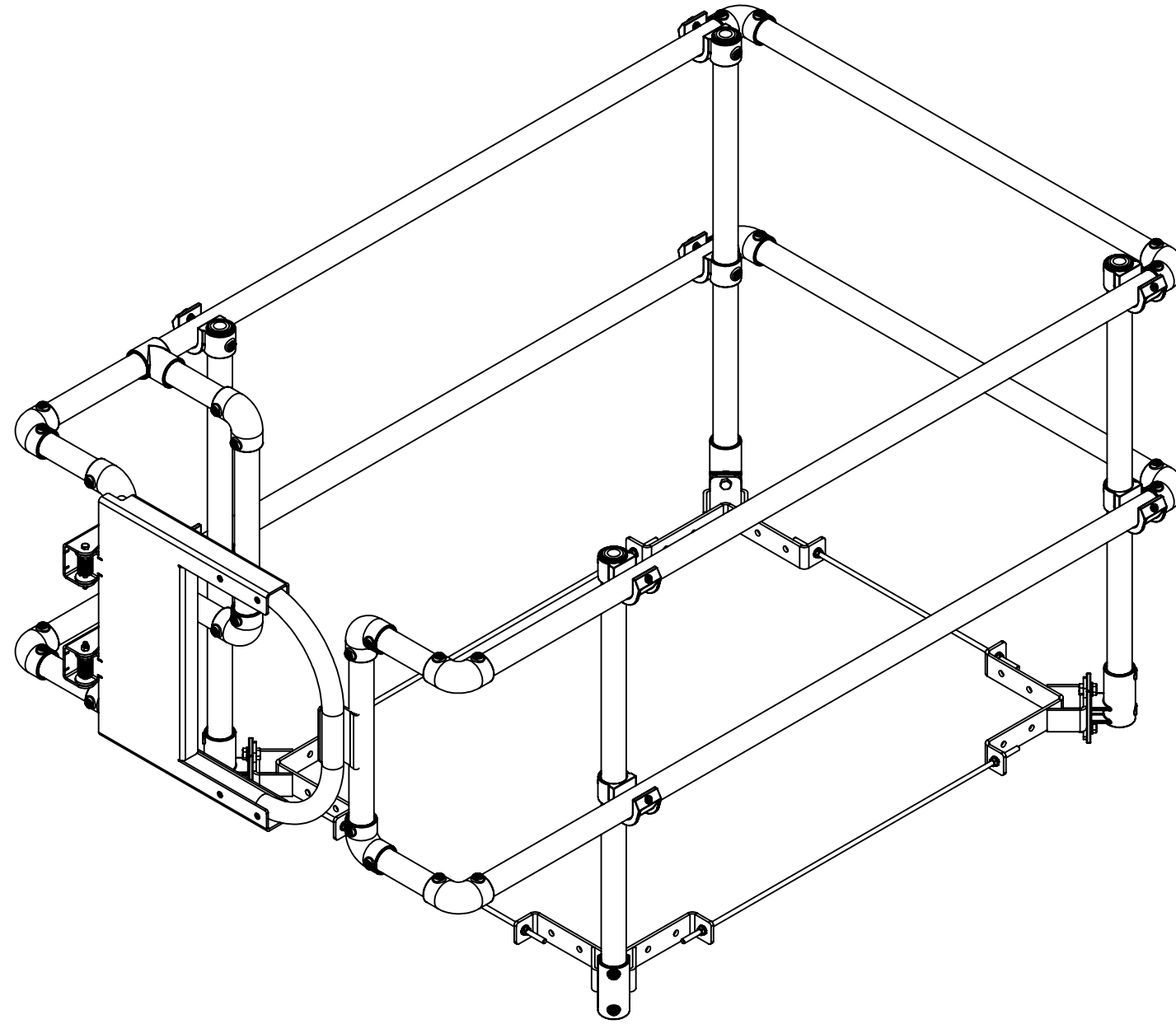


REVISIONS				
ZONE	REV.	DESCRIPTION	DATE	APPROVED
D8	1	1ST RELEASE	2021-07-30	D.WU




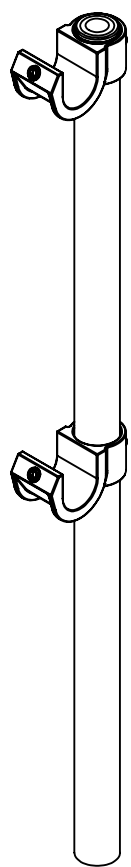
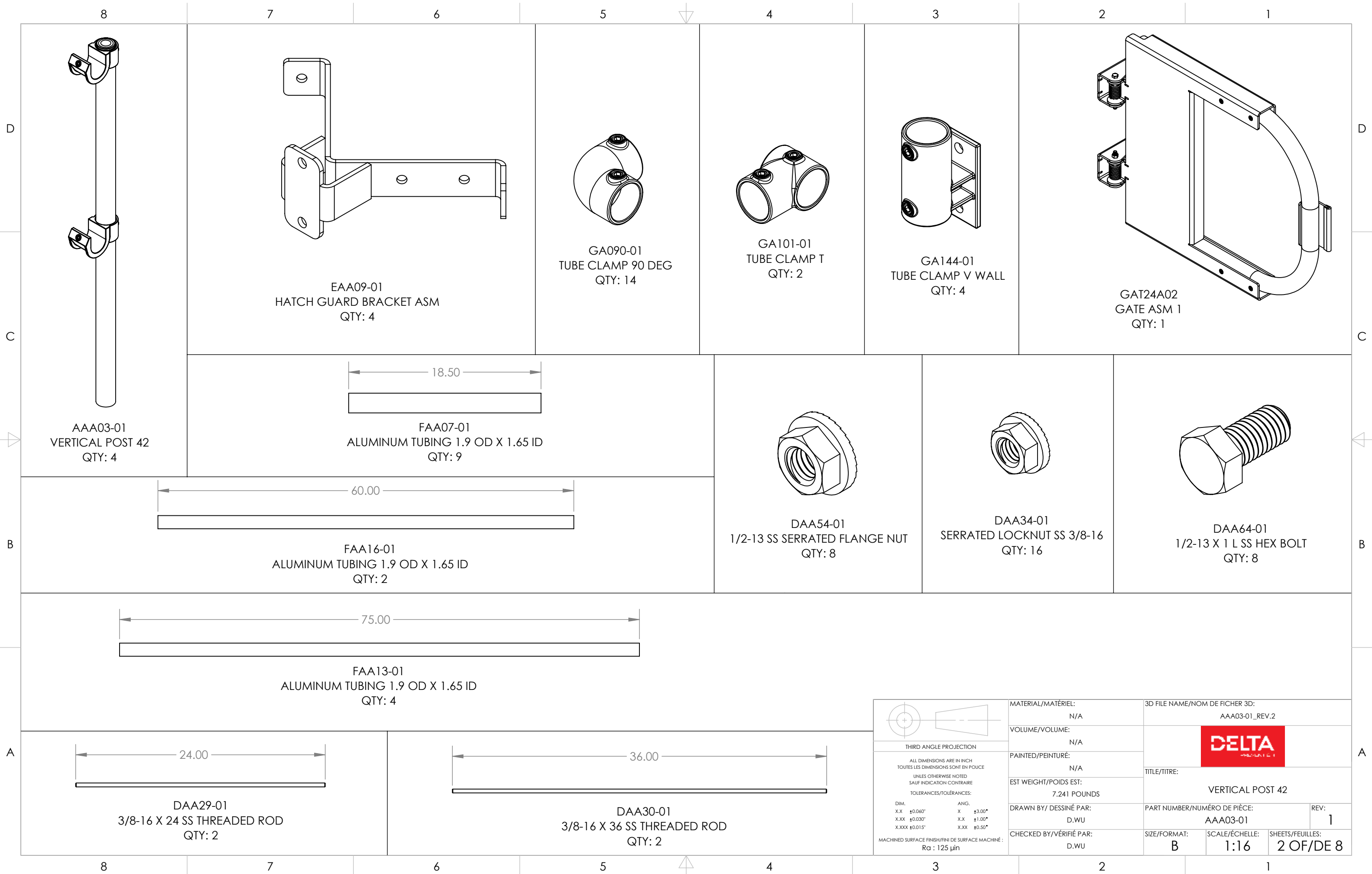
HGKTSF01 INSTALLATION GUIDE
REVISION: 2
DOCUMENT PN: CAA25-01
DOCUMENT REVISION: 1



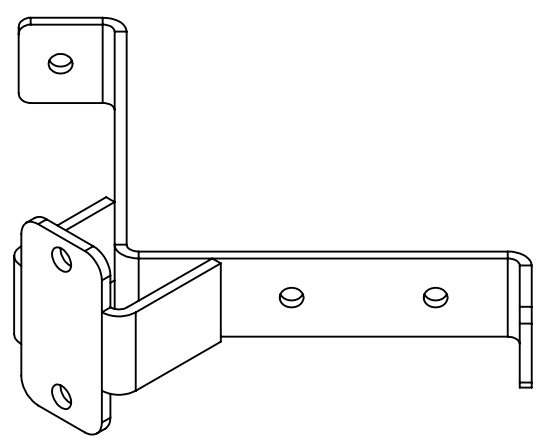
THIRD ANGLE PROJECTION
 ALL DIMENSIONS ARE IN INCH
 TOUTES LES DIMENSIONS SONT EN POUCE
 UNLESS OTHERWISE NOTED
 SAUF INDICATION CONTRAIRE
 TOLERANCES/TOLÉRANCES:
 DIM. ANG.
 X.X ±0.060° X ±3.00°
 X.XX ±0.030° X.X ±1.00°
 X.XXX ±0.015° X.XX ±0.50°
 MACHINED SURFACE FINISH/FINI DE SURFACE MACHINÉ:
 Ra : 125 µin

MATERIAL/MATÉRIEL:
N/A
 VOLUME/VOLUME:
N/A
 PAINTED/PEINTURÉ:
N/A
 EST WEIGHT/POIDS EST:
143.800 POUNDS
 DRAWN BY/ DESSINÉ PAR:
D.WU
 CHECKED BY/VÉRIFIÉ PAR:
D.WU

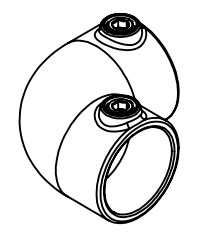
3D FILE NAME/NOM DE FICHER 3D:
HGKTSF01_REV.2

 TITLE/TITRE:
HATCH GUARD KIT STANDARD FRONT
ACCESS
 PART NUMBER/NUMÉRO DE PIÈCE:
HGKTSF01
 REV:
1
 SIZE/FORMAT:
B
 SCALE/ÉCHELLE:
1:12
 SHEETS/FEUILLES:
1 OF/DE 8



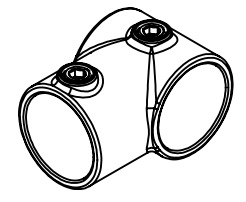
AAA03-01
VERTICAL POST 42
QTY: 4



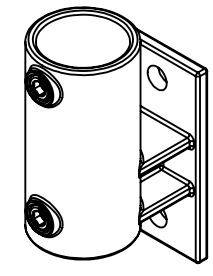
EAA09-01
HATCH GUARD BRACKET ASM
QTY: 4



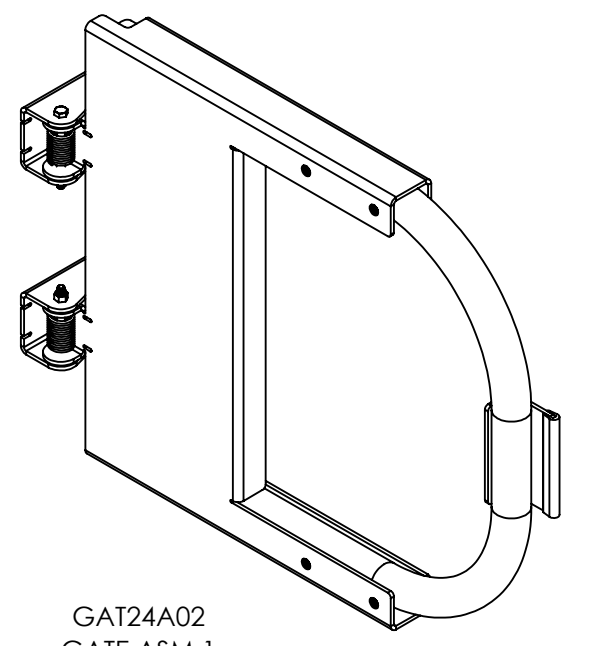
GA090-01
TUBE CLAMP 90 DEG
QTY: 14



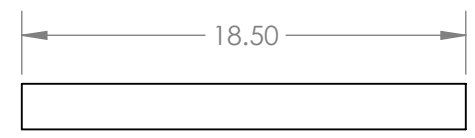
GA101-01
TUBE CLAMP T
QTY: 2



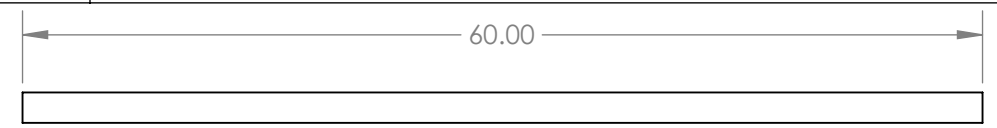
GA144-01
TUBE CLAMP V WALL
QTY: 4



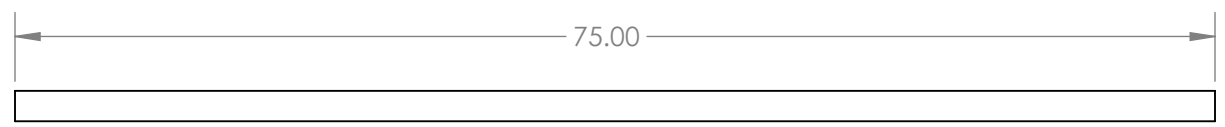
GAT24A02
GATE ASM 1
QTY: 1



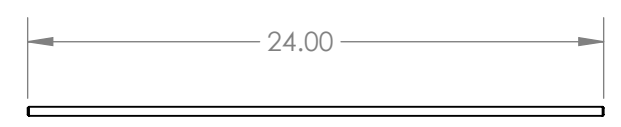
FAA07-01
ALUMINUM TUBING 1.9 OD X 1.65 ID
QTY: 9



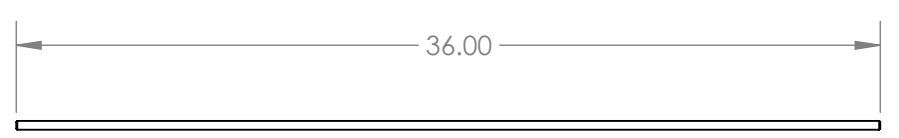
FAA16-01
ALUMINUM TUBING 1.9 OD X 1.65 ID
QTY: 2



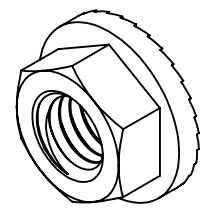
FAA13-01
ALUMINUM TUBING 1.9 OD X 1.65 ID
QTY: 4



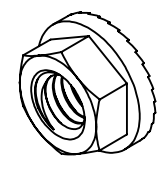
DAA29-01
3/8-16 X 24 SS THREADED ROD
QTY: 2



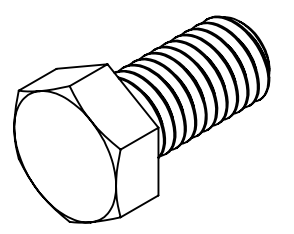
DAA30-01
3/8-16 X 36 SS THREADED ROD
QTY: 2



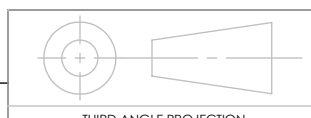
DAA54-01
1/2-13 SS SERRATED FLANGE NUT
QTY: 8



DAA34-01
SERRATED LOCKNUT SS 3/8-16
QTY: 16



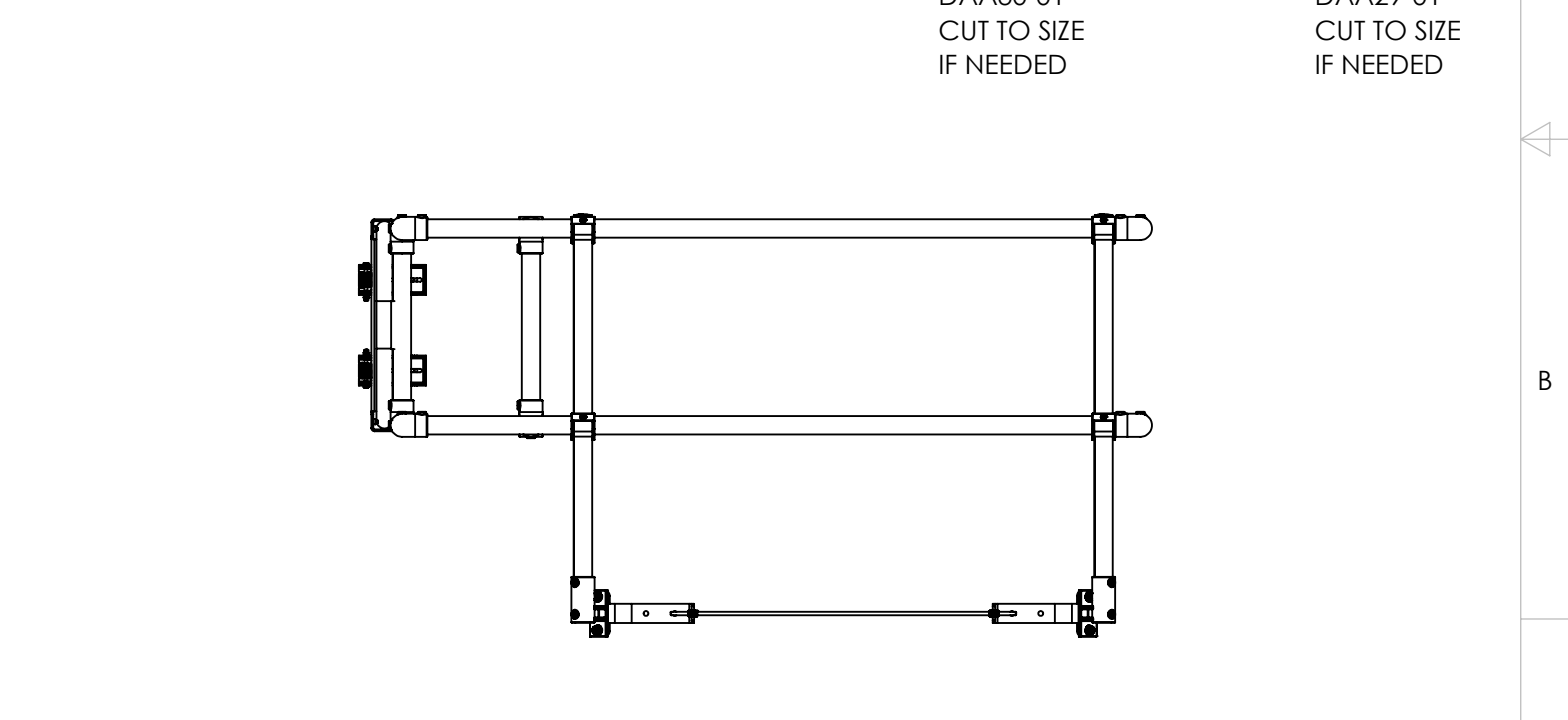
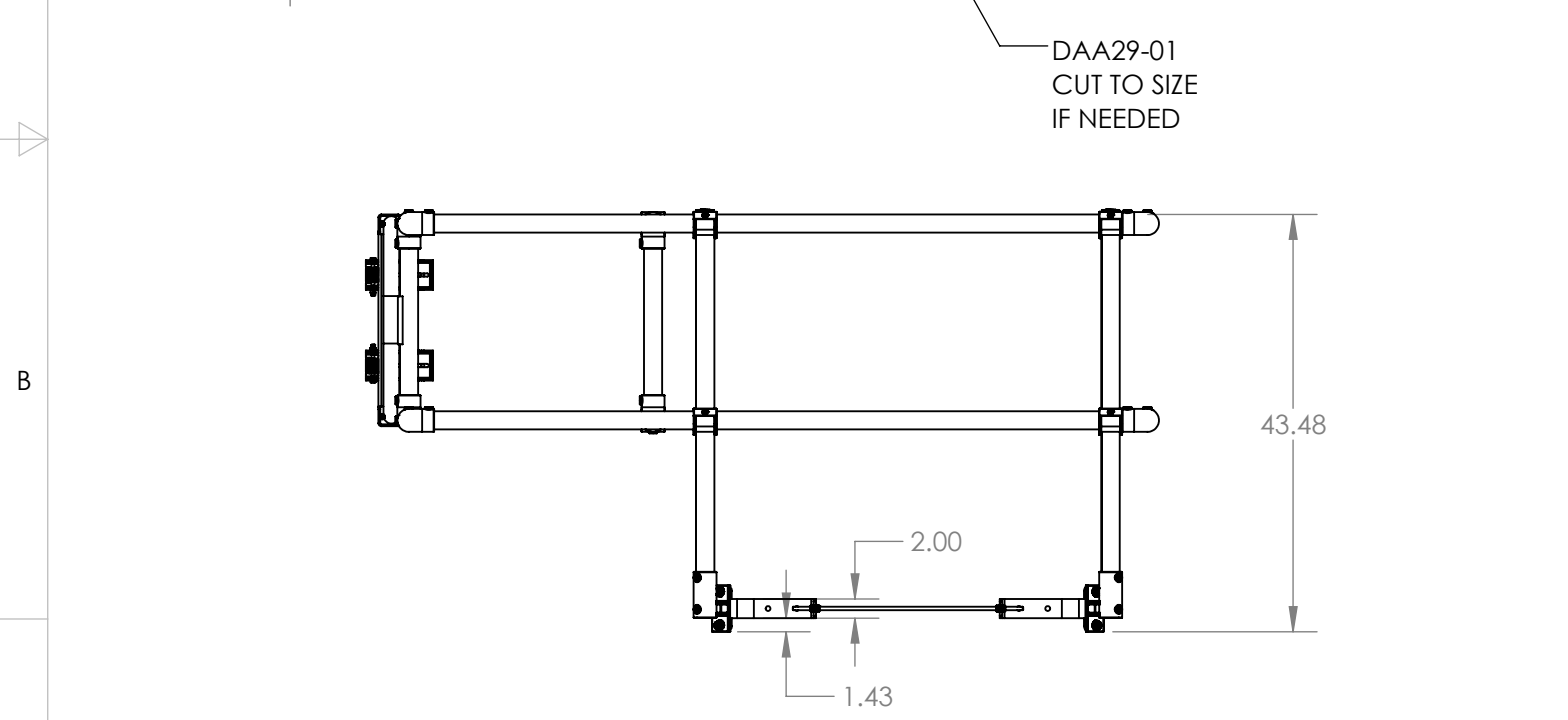
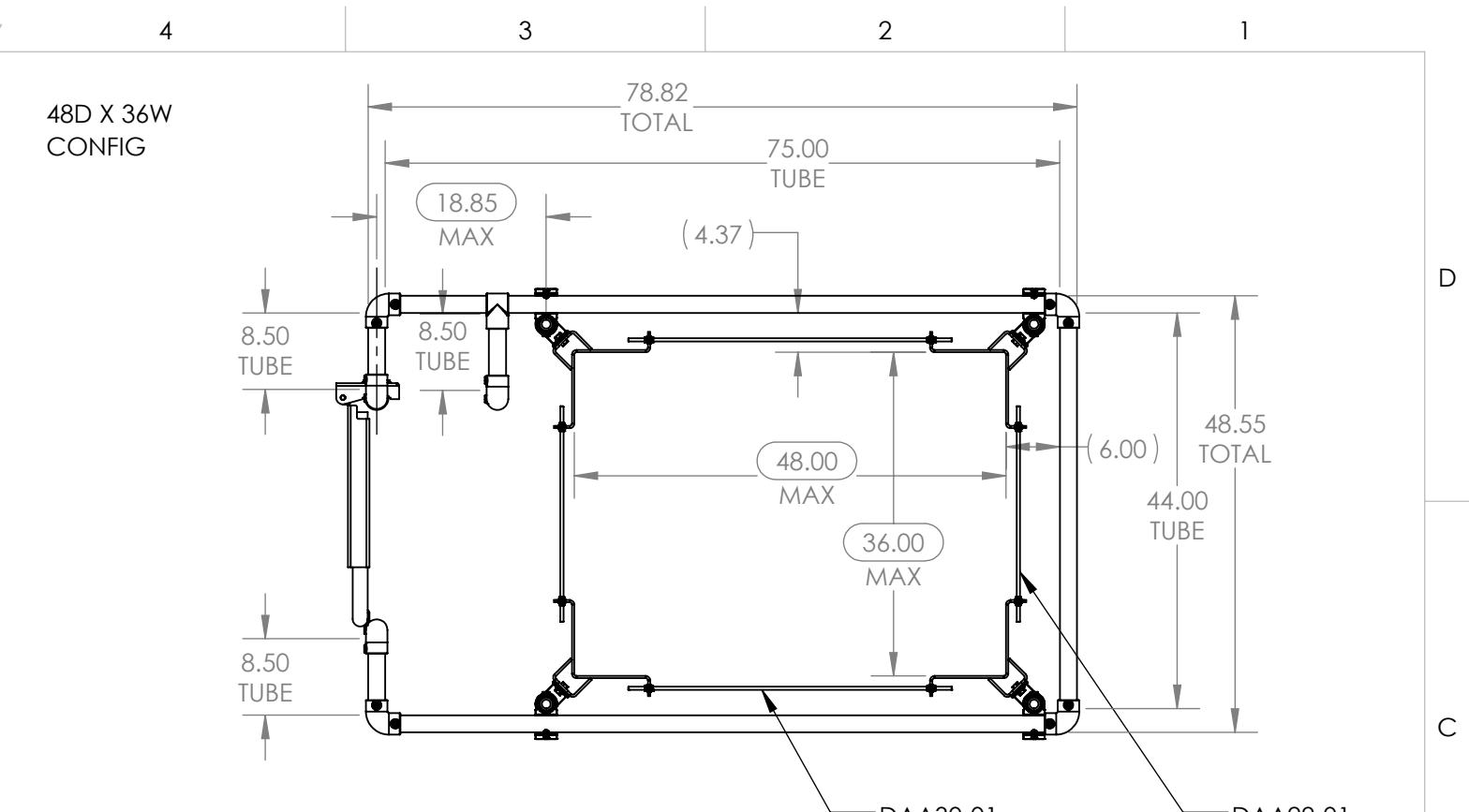
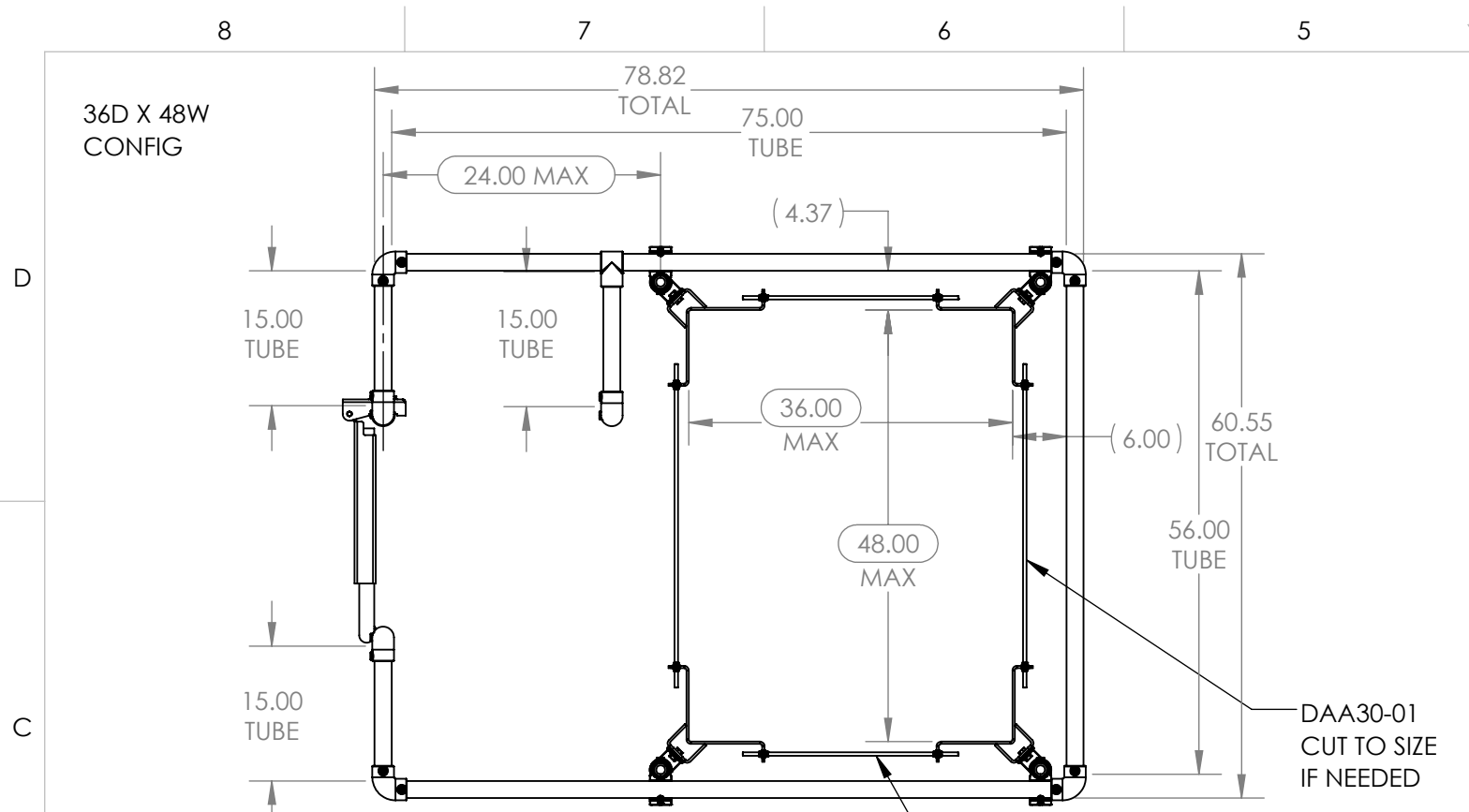
DAA64-01
1/2-13 X 1 L SS HEX BOLT
QTY: 8



THIRD ANGLE PROJECTION
ALL DIMENSIONS ARE IN INCH
TOUTES LES DIMENSIONS SONT EN POUCE
UNLESS OTHERWISE NOTED
SAUF INDICATION CONTRAIRE
TOLERANCES/TOLÉRANCES:
DIM. ANG.
X.X ±0.060° X ±3.00°
X.XX ±0.030° X.X ±1.00°
X.XXX ±0.015° X.XX ±0.50°
MACHINED SURFACE FINISH/FINI DE SURFACE MACHINÉ:
Ra : 125 µin

MATERIAL/MATÉRIEL:
N/A
VOLUME/VOLUME:
N/A
PAINTED/PEINTURÉ:
N/A
EST WEIGHT/POIDS EST:
7.241 POUNDS
DRAWN BY/ DESSINÉ PAR:
D.WU
CHECKED BY/VÉRIFIÉ PAR:
D.WU

3D FILE NAME/NOM DE FICHER 3D:
AAA03-01_REV.2
DELTA
TITLE/TITRE:
VERTICAL POST 42
PART NUMBER/NUMÉRO DE PIÈCE:
AAA03-01
REV:
1
SIZE/FORMAT:
B
SCALE/ÉCHELLE:
1:16
SHEETS/FEUILLES:
2 OF/DE 8



PLEASE NOTE RELATIONSHIP BETWEEN "MAX" DIMENSIONS AND "TUBE" DIMENSIONS WHEN CUTTING TO SIZE

2 INCHES OF SPACE IS NEEDED WITH AT LEAST 1.43" FROM THE GROUND FOR PROPER CLAMPING OF THE BRACKET

DIMENSIONAL SPECIFICATIONS

THIRD ANGLE PROJECTION

ALL DIMENSIONS ARE IN INCH
TOUTES LES DIMENSIONS SONT EN POUCE
UNLES OTHERWISE NOTED
SAUF INDICATION CONTRAIRE

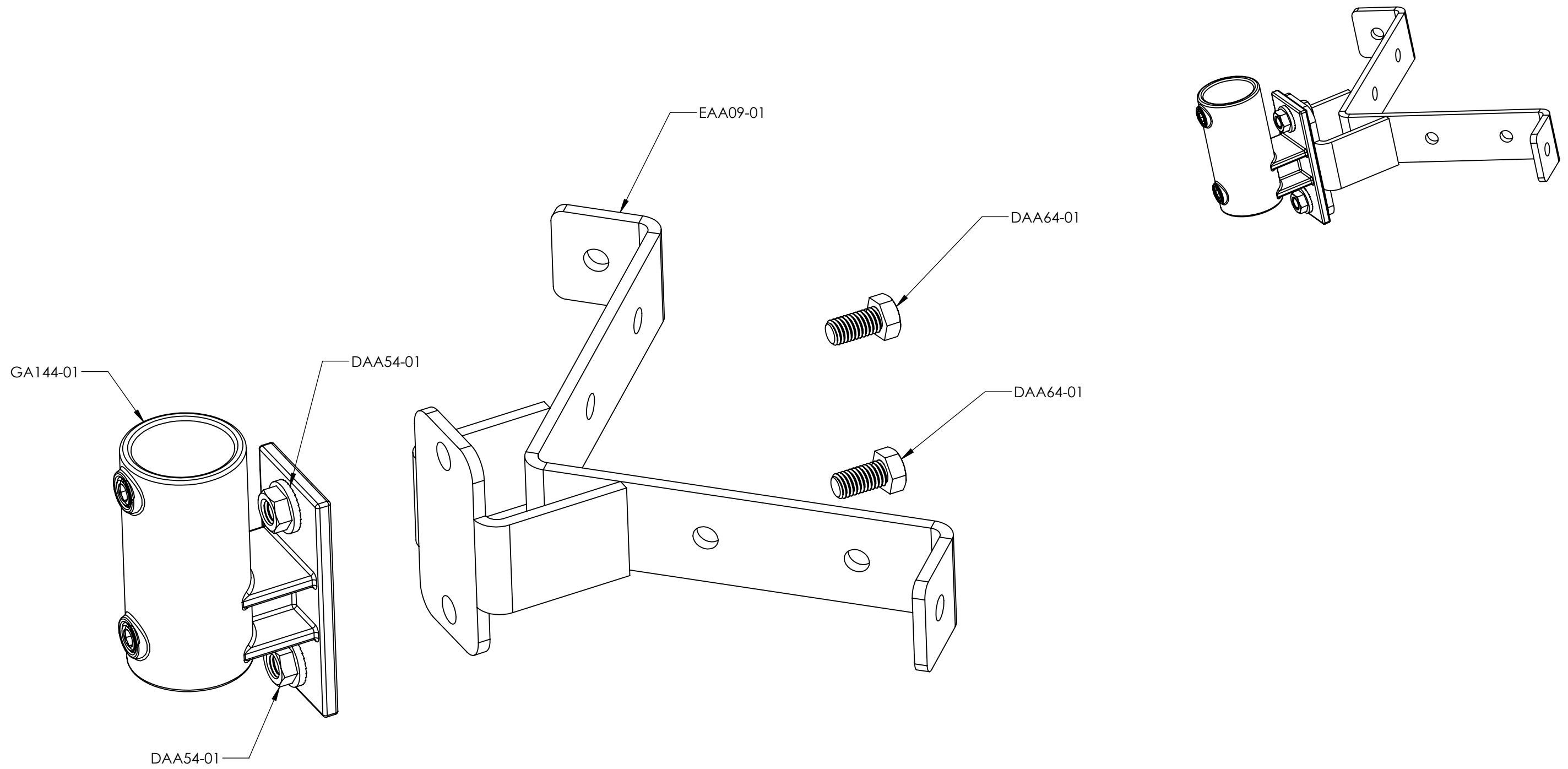
TOLERANCES/TOLÉRANCES:

DIM.	ANG.
X.X ±0.060"	X ±3.00°
X.XX ±0.030"	X.X ±1.00°
X.XXX ±0.015"	X.XX ±0.50°

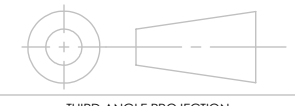

MACHINED SURFACE FINISH/FINI DE SURFACE MACHINÉ:
Ra : 125 µin

MATERIAL/MATÉRIEL: N/A	3D FILE NAME/NOM DE FICHER 3D: HGKTSF01_REV.2	
VOLUME/VOLUME: N/A		
PAINTED/PEINTURÉ: N/A		
EST WEIGHT/POIDS EST: 143.800 POUNDS	TITLE/TITRE: HATCH GUARD KIT STANDARD FRONT ACCESS	
DRAWN BY/ DESSINÉ PAR: D.WU	PART NUMBER/NUMÉRO DE PIÈCE: HGKTSF01	REV: 1
CHECKED BY/VÉRIFIÉ PAR: D.WU	SIZE/FORMAT: B	SCALE/ÉCHELLE: 1:20
	SHEETS/FEUILLES: 3 OF/DE 8	

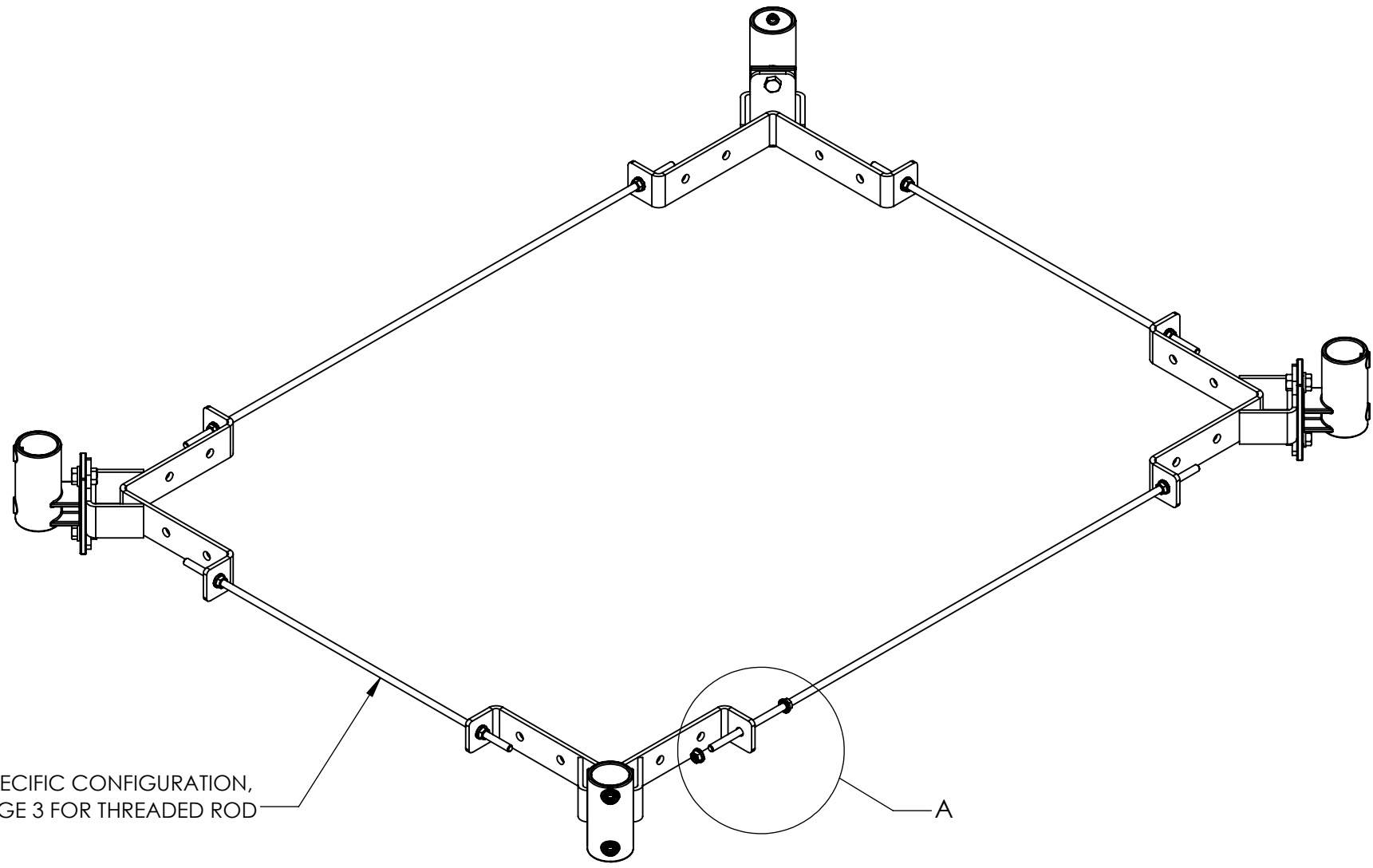
STEP 1



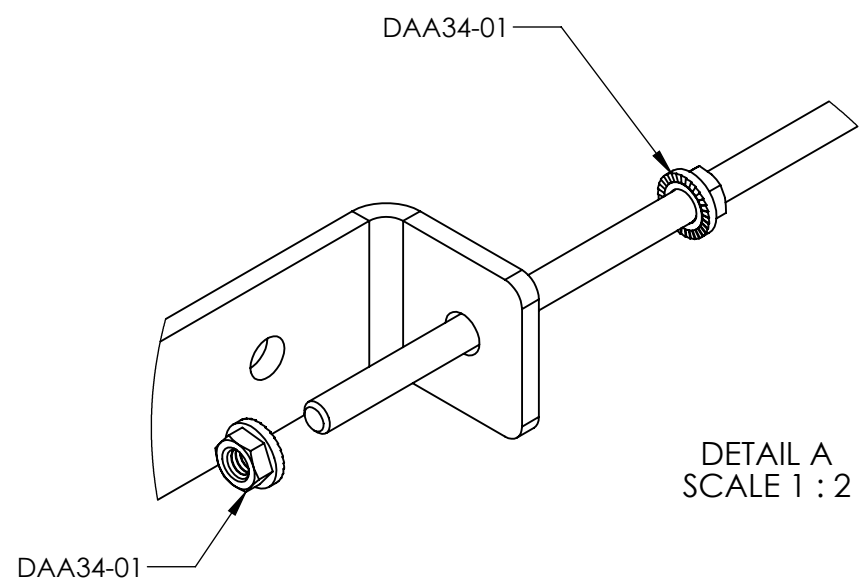
REPEAT 4X FOR ALL CORNERS

 <p>THIRD ANGLE PROJECTION</p> <p>ALL DIMENSIONS ARE IN INCH TOUTES LES DIMENSIONS SONT EN POUCE UNLES OTHERWISE NOTED SAUF INDICATION CONTRAIRE TOLERANCES/TOLÉRANCES:</p> <table border="0"> <tr> <td>DIM.</td> <td>ANG.</td> </tr> <tr> <td>X.X ±0.060"</td> <td>X ±3.00°</td> </tr> <tr> <td>X.XX ±0.030"</td> <td>X.X ±1.00°</td> </tr> <tr> <td>X.XXX ±0.015"</td> <td>X.XX ±0.50°</td> </tr> </table> <p>MACHINED SURFACE FINISH/FINI DE SURFACE MACHINÉ: Ra : 125 µin</p>	DIM.	ANG.	X.X ±0.060"	X ±3.00°	X.XX ±0.030"	X.X ±1.00°	X.XXX ±0.015"	X.XX ±0.50°	MATERIAL/MATÉRIEL: N/A	3D FILE NAME/NOM DE FICHER 3D: HGKTSF01_REV.2	
	DIM.	ANG.									
X.X ±0.060"	X ±3.00°										
X.XX ±0.030"	X.X ±1.00°										
X.XXX ±0.015"	X.XX ±0.50°										
	VOLUME/VOLUME: N/A										
	PAINTED/PEINTURÉ: N/A										
	EST WEIGHT/POIDS EST: 143.800 POUNDS	TITLE/TITRE: HATCH GUARD KIT STANDARD FRONT ACCESS									
	DRAWN BY/ DESSINÉ PAR: D.WU	PART NUMBER/NUMÉRO DE PIÈCE: HGKTSF01	REV: 1								
	CHECKED BY/VÉRIFIÉ PAR: D.WU	SIZE/FORMAT: B	SCALE/ÉCHELLE: 1:4	SHEETS/FEUILLES: 4 OF/DE 8							

STEP 2



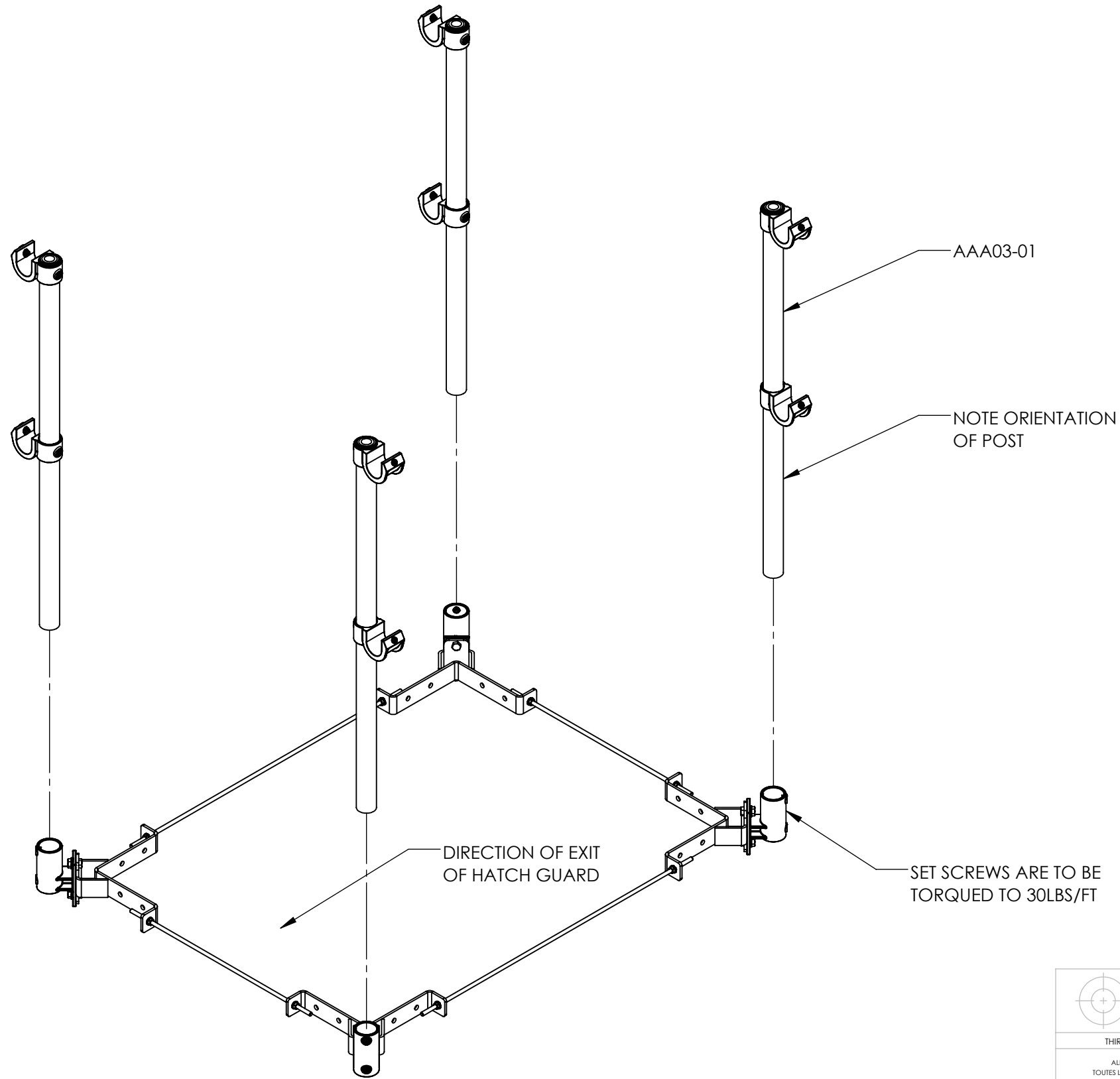
FOR SPECIFIC CONFIGURATION,
SEE PAGE 3 FOR THREADED ROD



DETAIL A
SCALE 1 : 2

<p>THIRD ANGLE PROJECTION</p> <p>ALL DIMENSIONS ARE IN INCH TOUTES LES DIMENSIONS SONT EN POUCE UNLES OTHERWISE NOTED SAUF INDICATION CONTRAIRE TOLERANCES/TOLÉRANCES:</p> <table border="0"> <tr> <td>DIM.</td> <td>ANG.</td> </tr> <tr> <td>X.X ±0.060"</td> <td>X ±3.00°</td> </tr> <tr> <td>X.XX ±0.030"</td> <td>X.X ±1.00°</td> </tr> <tr> <td>X.XXX ±0.015"</td> <td>X.XX ±0.50°</td> </tr> </table> <p>MACHINED SURFACE FINISH/FINI DE SURFACE MACHINÉ: Ra : 125 µin</p>	DIM.	ANG.	X.X ±0.060"	X ±3.00°	X.XX ±0.030"	X.X ±1.00°	X.XXX ±0.015"	X.XX ±0.50°	<p>MATERIAL/MATÉRIEL: N/A</p> <p>VOLUME/VOLUME: N/A</p> <p>PAINTED/PEINTURE: N/A</p> <p>EST WEIGHT/POIDS EST: 143.800 POUNDS</p> <p>DRAWN BY/ DESSINÉ PAR: D.WU</p> <p>CHECKED BY/VÉRIFIÉ PAR: D.WU</p>	<p>3D FILE NAME/NOM DE FICHER 3D: HGKTSF01_REV.2</p> <div style="text-align: center;"> </div> <p>TITLE/TITRE: HATCH GUARD KIT STANDARD FRONT ACCESS</p> <p>PART NUMBER/NUMÉRO DE PIÈCE: HGKTSF01</p> <p>REV: 1</p>
	DIM.	ANG.								
X.X ±0.060"	X ±3.00°									
X.XX ±0.030"	X.X ±1.00°									
X.XXX ±0.015"	X.XX ±0.50°									
<p>SIZE/FORMAT: B</p> <p>SCALE/ÉCHELLE: 1:8</p> <p>SHEETS/FEUILLES: 5 OF/DE 8</p>										

STEP 3



THIRD ANGLE PROJECTION


ALL DIMENSIONS ARE IN INCH
TOUTES LES DIMENSIONS SONT EN POUCE

UNLES OTHERWISE NOTED
SAUF INDICATION CONTRAIRE

TOLERANCES/TOLÉRANCES:

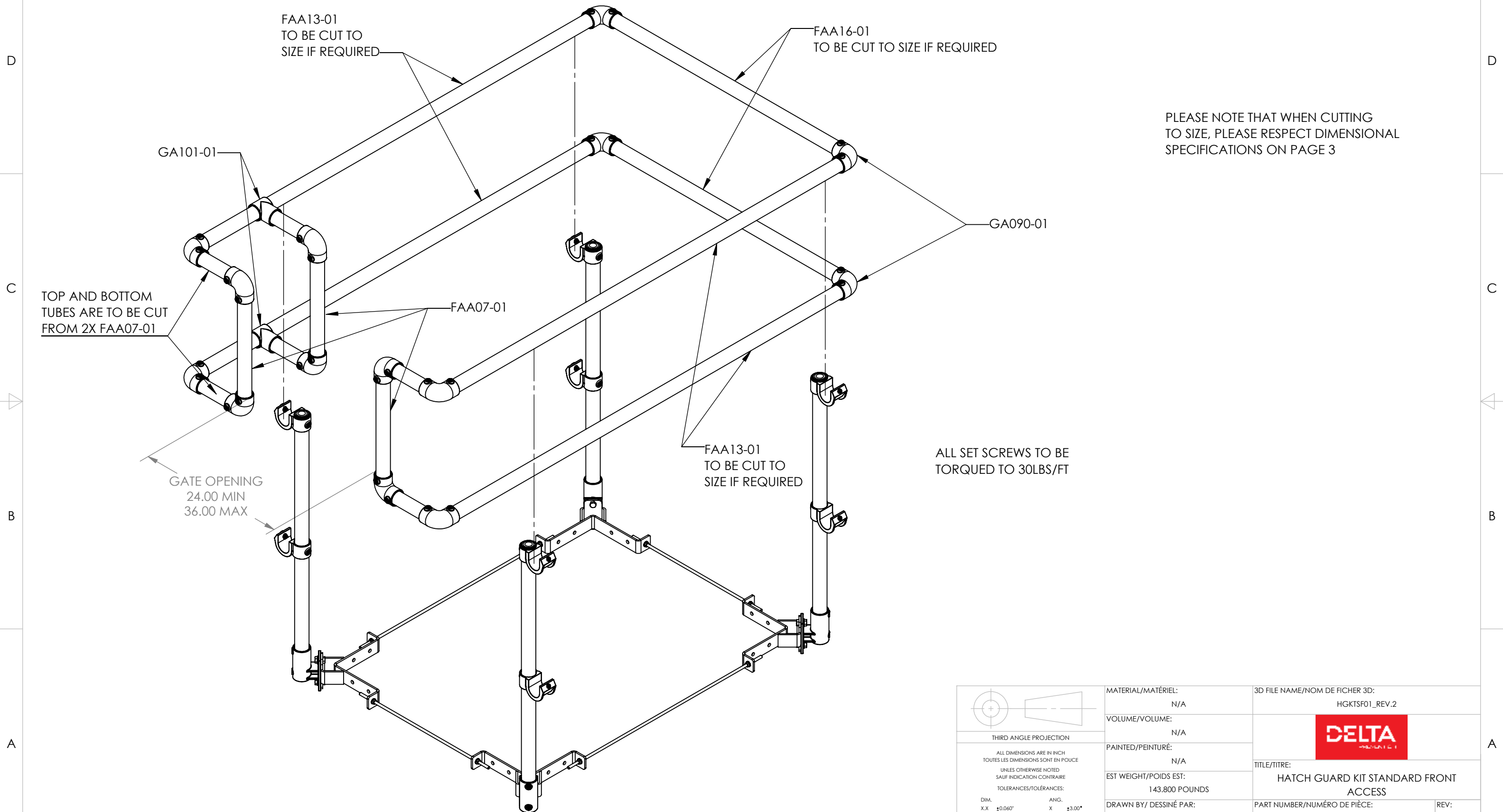
DIM.	ANG.
X.X ±0.060"	X ±3.00°
X.XX ±0.030"	X.X ±1.00°
X.XXX ±0.015"	X.XX ±0.50°

MACHINED SURFACE FINISH/FINI DE SURFACE MACHINÉ:
Ra : 125 µin

MATERIAL/MATÉRIEL: N/A	3D FILE NAME/NOM DE FICHER 3D: HGKTSF01_REV.2
VOLUME/VOLUME: N/A	
PAINTED/PEINTURÉ: N/A	
EST WEIGHT/POIDS EST: 143.800 POUNDS	TITLE/TITRE: HATCH GUARD KIT STANDARD FRONT ACCESS
DRAWN BY/ DESSINÉ PAR: D.WU	PART NUMBER/NUMÉRO DE PIÈCE: HGKTSF01
CHECKED BY/VÉRIFIÉ PAR: D.WU	REV: 1

SIZE/FORMAT: B	SCALE/ÉCHELLE: 1:12	SHEETS/FEUILLES: 6 OF/DE 8
-------------------	------------------------	-------------------------------

STEP 4



PLEASE NOTE THAT WHEN CUTTING TO SIZE, PLEASE RESPECT DIMENSIONAL SPECIFICATIONS ON PAGE 3

ALL SET SCREWS TO BE TORQUED TO 30LBS/FT

GATE OPENING
24.00 MIN
36.00 MAX

TOP AND BOTTOM TUBES ARE TO BE CUT FROM 2X FAA07-01

FAA13-01
TO BE CUT TO SIZE IF REQUIRED

FAA16-01
TO BE CUT TO SIZE IF REQUIRED

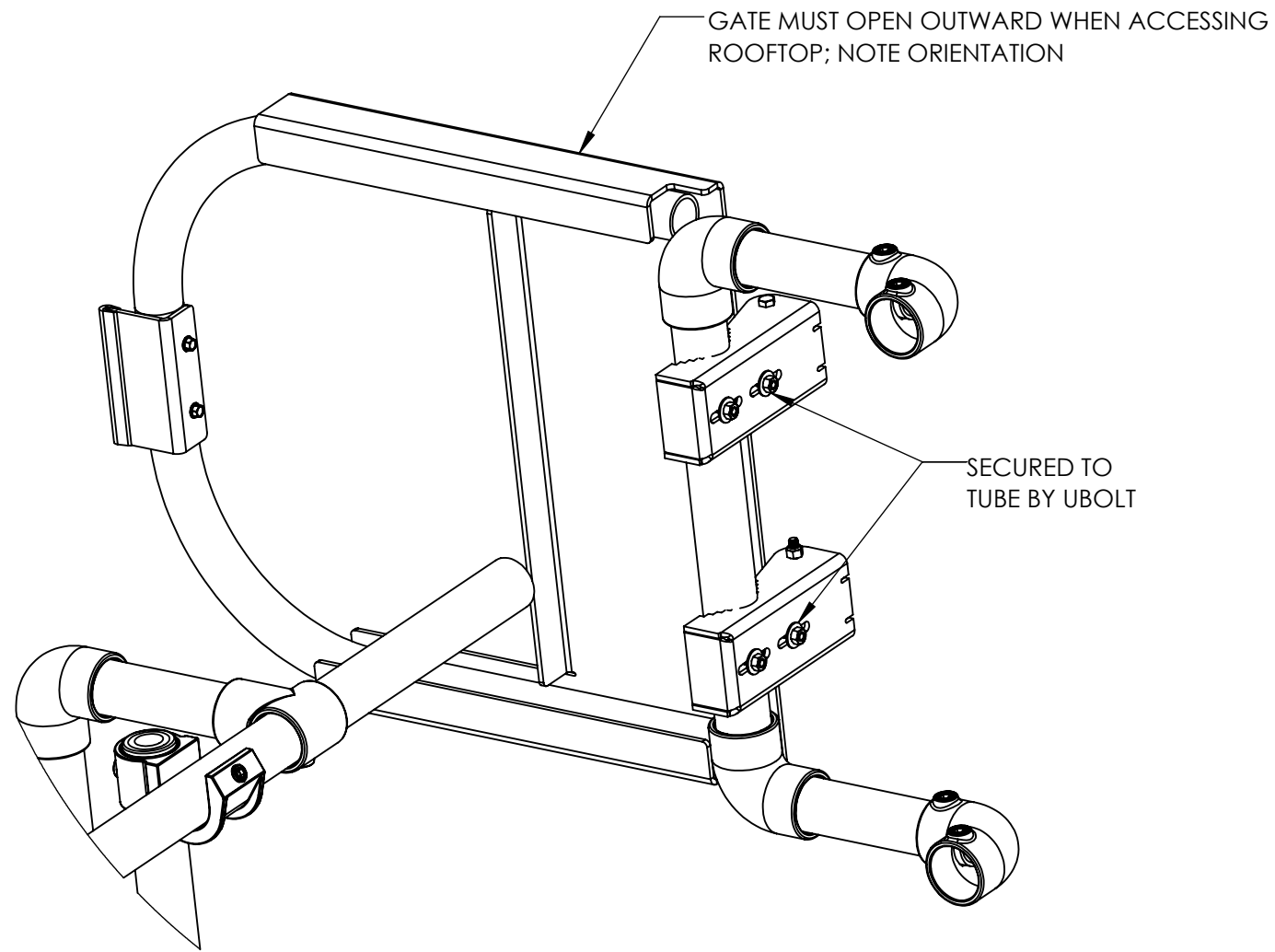
GA090-01

FAA07-01

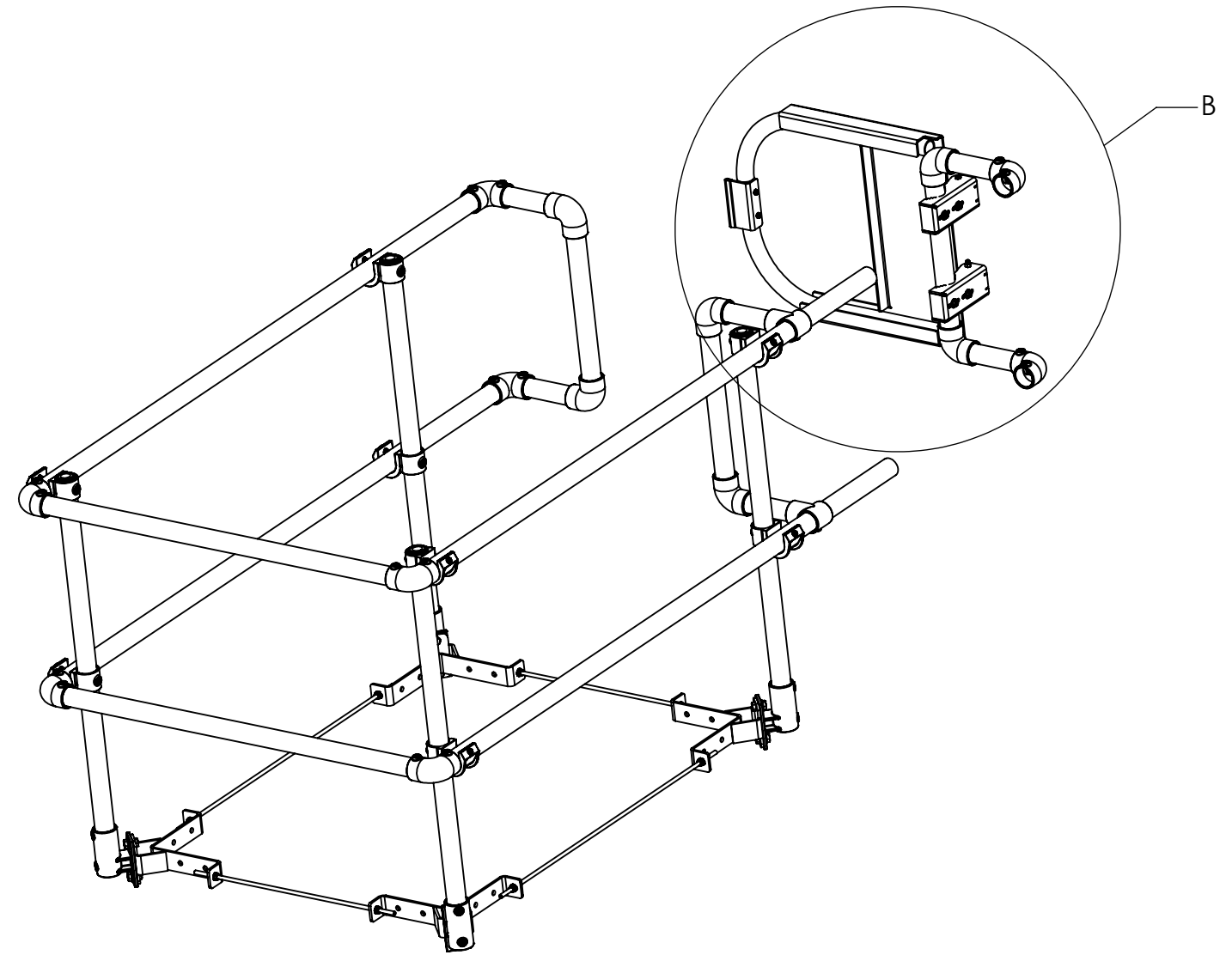
FAA13-01
TO BE CUT TO SIZE IF REQUIRED

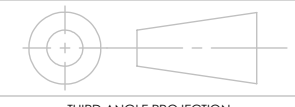

<p>THIRD ANGLE PROJECTION</p> <p>ALL DIMENSIONS ARE IN INCH TOUTES LES DIMENSIONS SONT EN POUCE UNLESS OTHERWISE NOTED SAUF INDICATION CONTRAIRE TOLERANCES/TOLÉRANCES:</p> <p>DIM. ANG.</p> <p>X.X ±0.060" X ±3.00"</p> <p>X.XX ±0.030" X.X ±1.00"</p> <p>X.XXX ±0.015" X.XX ±0.50"</p> <p>MACHINED SURFACE FINISH/FINI DE SURFACE MACHINÉ: Ra : 125 µin</p>	MATERIAL/MATÉRIEL: N/A	3D FILE NAME/NOM DE FICHER 3D: HGKTSF01_REV.2		
	VOLUME/VOLUME: N/A	<p>TITLE/TITRE: HATCH GUARD KIT STANDARD FRONT ACCESS</p>		
PAINTED/PEINTURÉ: N/A	EST WEIGHT/POIDS EST: 143.800 POUNDS			PART NUMBER/NUMÉRO DE PIÈCE: HGKTSF01
DRAWN BY/ DESSINÉ PAR: D.WU	CHECKED BY/VÉRIFIÉ PAR: D.WU	SIZE/FORMAT: B	SCALE/ÉCHELLE: 1:12	SHEETS/FEUILLES: 7 OF/DE 8

STEP 5



DETAIL B
SCALE 1 : 6



 THIRD ANGLE PROJECTION ALL DIMENSIONS ARE IN INCH TOUTES LES DIMENSIONS SONT EN POUCE UNLESS OTHERWISE NOTED SAUF INDICATION CONTRAIRE TOLERANCES/TOLÉRANCES: DIM. ANG. X.X ±0.060" X ±3.00" X.XX ±0.030" X.X ±1.00" X.XXX ±0.015" X.XX ±0.50" MACHINED SURFACE FINISH/FINI DE SURFACE MACHINÉ: Ra : 125 µin	MATERIAL/MATÉRIEL: N/A	3D FILE NAME/NOM DE FICHER 3D: HGKTSF01_REV.2		
	VOLUME/VOLUME: N/A	 TITLE/TITRE: HATCH GUARD KIT STANDARD FRONT ACCESS		
PAINTED/PEINTURÉ: N/A	EST WEIGHT/POIDS EST: 143.800 POUNDS			PART NUMBER/NUMÉRO DE PIÈCE: HGKTSF01
DRAWN BY/ DESSINÉ PAR: D.WU	CHECKED BY/VÉRIFIÉ PAR: D.WU	SIZE/FORMAT: B	SCALE/ÉCHELLE: 1:16	SHEETS/FEUILLES: 8 OF/DE 8