



# FREESTANDING GUARDRAILS

The roof guardrail system from Delta Prevention is extremely popular for permanently eliminating your roof fall hazards. Thanks to multiple configurations available, they are the most versatile on the market.



## FEATURES

- No damage to the roof because 100% freestanding
- Aluminum tubing prevents peeling paint
- High adhesion recycled rubber bases
- Ultimate resistance to rust and deterioration caused by rain, temperature changes and acidic environments
- Quick and easy installation on roofs with or without parapet
- Compliance report included
- 10 year warranty
- Made in Canada
- Complies with NBC, OBC, Worksafe BC and OSHA standards

## VSS CLASSIC



Linear configuration to secure between a minimum of 10 feet up to your entire perimeter without any return. Can be installed at an angle to lower the visual impact on your building.

### The best choice for:

- Long sections
- Roof without parapet

### Application:

- Medium-large HVAC
- Access ladder protection
- Rooftop walkway

## VSS COMPACT



Ideal configuration when floor space is reduced between the units to be protected and the parapet. A return of only 5 feet is required at each end, regardless of length, and at 40 foot intervals when there is no parapet.

### The best choice for:

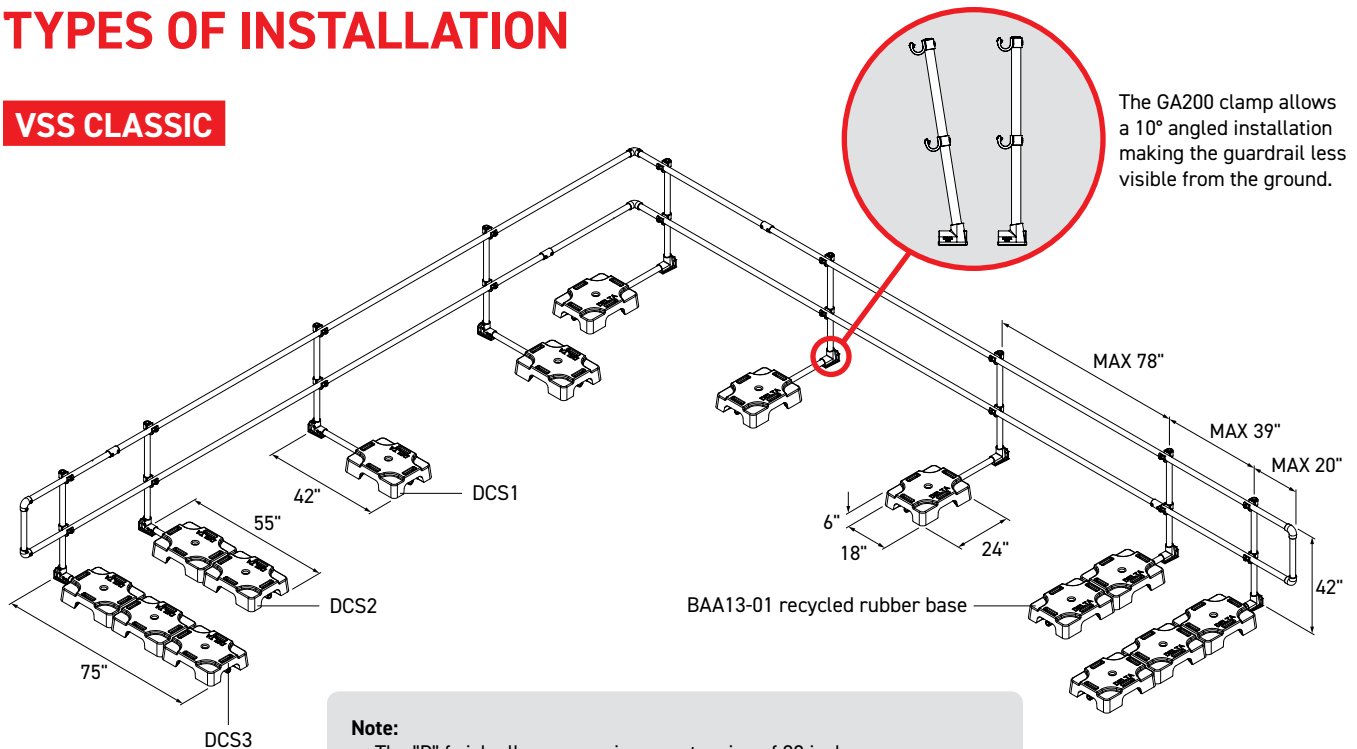
- Restricted space
- Use with permanent warning line
- Closed perimeter
- Temporary installation

### Application:

- Snow chutes
- Small HVAC
- Skylights

# TYPES OF INSTALLATION

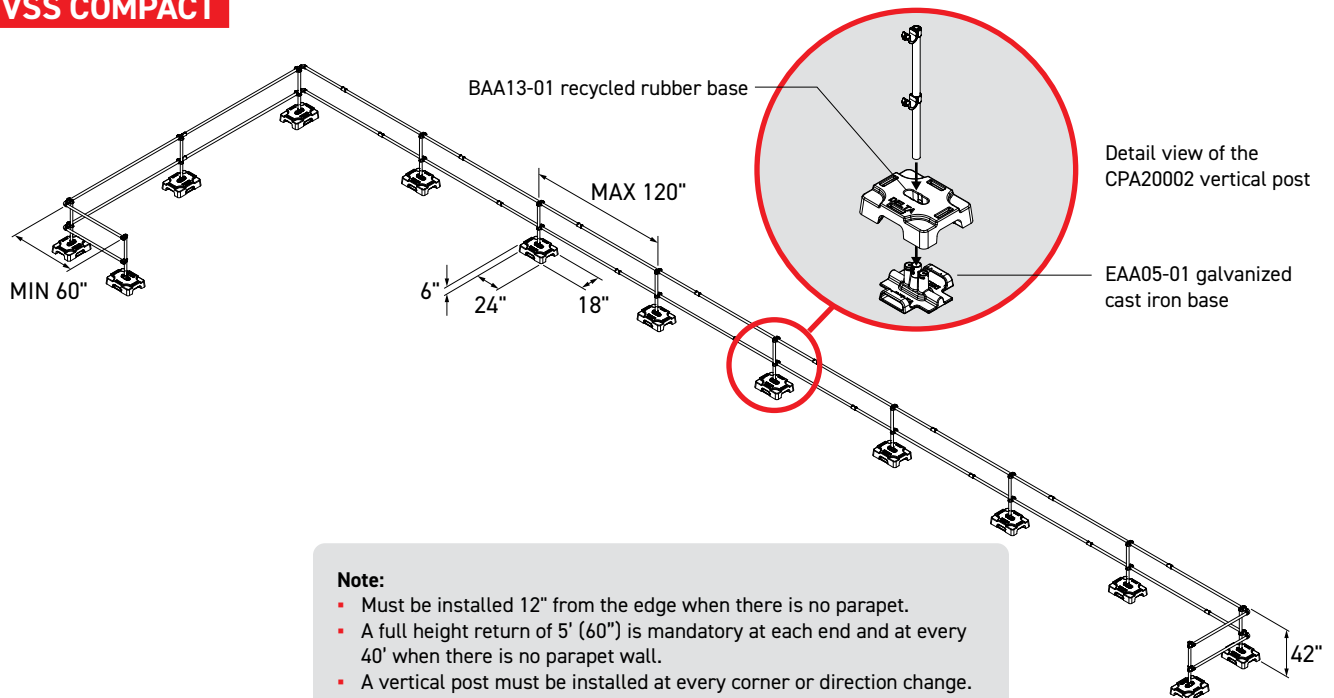
## VSS CLASSIC



### Note:

- The "D" finish allows a maximum extension of 20 inches.
- The ends of the VSS Classic system are always composed of a DCS3 and a DCS2, located 39 inches apart.
- The measurements shown represent the maximum lengths between two vertical posts (78").
- Must be installed at 12" from the edge when there is no parapet.

## VSS COMPACT



### Note:

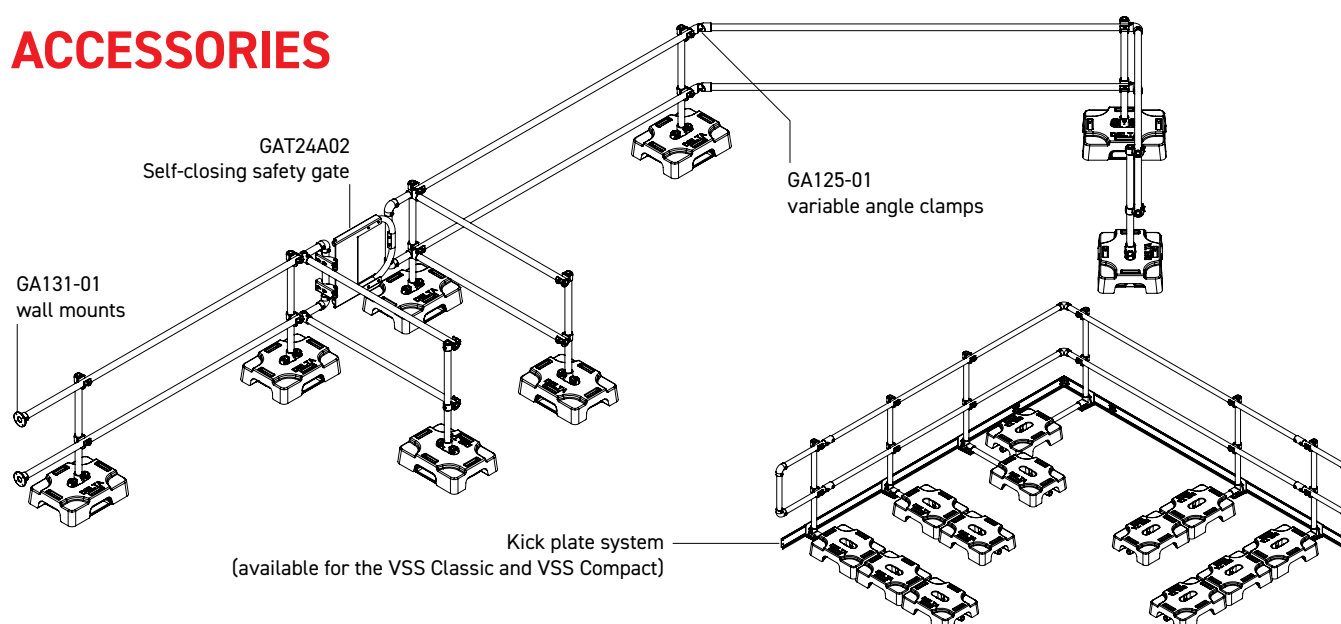
- Must be installed 12" from the edge when there is no parapet.
- A full height return of 5' (60") is mandatory at each end and at every 40' when there is no parapet wall.
- A vertical post must be installed at every corner or direction change.
- The measurements shown represent the maximum lengths between two vertical posts (120").
- End-returns are not considered fall protection.

# TECHNICAL SHEET

	VSS Classic	VSS Compact
<b>Minimum length:</b>	72"	120"
<b>Height:</b>	42"	42"
<b>Max distance between posts:</b>	78"	120"
<b>Full height returns:</b>	Not required	At each end and every 40' on roofs without a parapet
<b>Counterweights:</b>	DCS1: 50 lb. DCS2: 100 lb DCS3: 150 lb	CPA20002: 100 lb BAA13-01 only: 50 lb EAA05-01 only: 50 lb
<b>Counterweight dimensions:</b>	DCS1: 42" x 18" x 6" DCS2: 55" x 18" x 6" DCS3: 75" x 18" x 6" BAA13-01 only: 24" x 18" x 6"	CPA20002: 24" x 18" x 6" BAA13-01 only: 24" x 18" x 6" EAA05-01 only: 17.25" x 17.25" x 8.35"
<b>Counterweights - material:</b>	BAA13-01: recycled rubber	BAA13-01: recycled rubber EAA05-01: hot dipped galvanized cast iron with glued 0.120" (3 mm) EPDM membrane
<b>Rails &amp; posts:</b>	Anodized 6061-T6 aluminum	Anodized 6061-T6 aluminum
<b>Rails - lengths:</b>	10' (120")*	10' (120")*
<b>Rails &amp; posts - outside diameters:</b>	1,9"	1,9"
<b>Rails &amp; posts - inside diameters:</b>	1,610"	1,610"
<b>Clamps - material:</b>	Malleable cast iron with hot-dip galvanizing & electroplating	Malleable cast iron with hot-dip galvanizing & electroplating
<b>Clamps - tightening torque:</b>	30 lb/pi	30 lb/pi
<b>Compatibility with VSS SafetyLine:</b>	Yes	Yes
<b>Application:</b>	Permanent, temporary	Permanent, temporary
<b>Design patent:</b>	#162630 (BAA13-01)	#162630 (BAA13-01)
<b>Complies with:</b>	RSST: 12 CNB: 4.1.5.14 CSA Z259.18:19 OSHA: 1926.502, 1926.501 Ontario Building Code: 4.1.5.14 WorkSafeBC: 11.2	RSST: 12 CNB: 4.1.5.14 CSA Z259.18:19 OSHA: 1926.502, 1926.501 Ontario Building Code: 4.1.5.14 WorkSafeBC: 11.2
<b>Warranty:</b>	10-year	10-year

\* 20' (240") rails available upon request. Additional fees and delays may apply.

## ACCESSORIES





## COMMON APPLICATIONS



HVAC unit - VSS Classic



Wall mount - VSS Compact



Level change - VSS Compact



Ballasted roof - VSS Classic



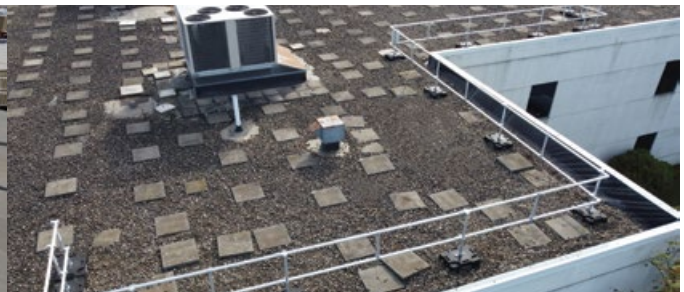
Roof drains - VSS Classic



Access staircase - VSS Classic



Sloping roof - VSS Classic



HVAC unit - VSS Compact



HVAC unit - VSS Compact



Roof with angle - VSS Classic