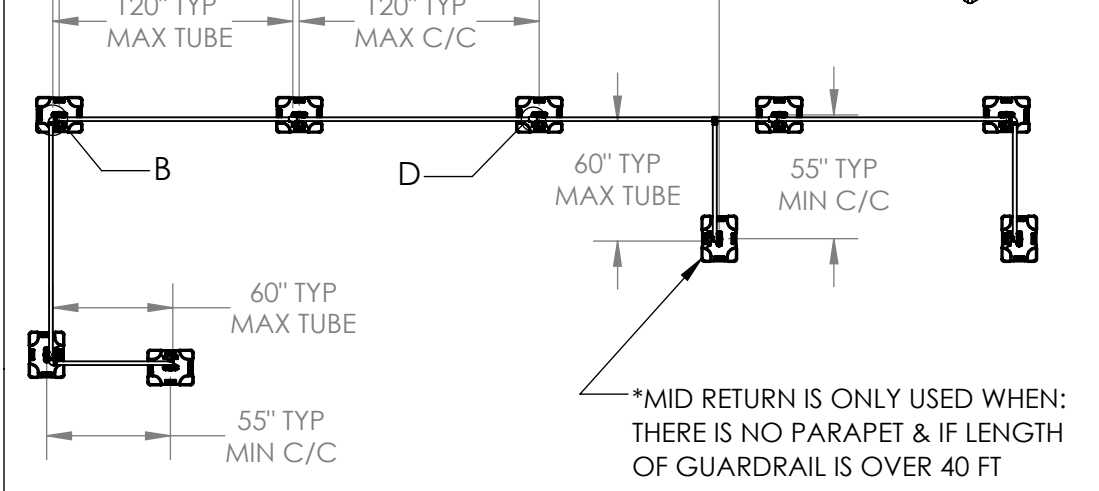
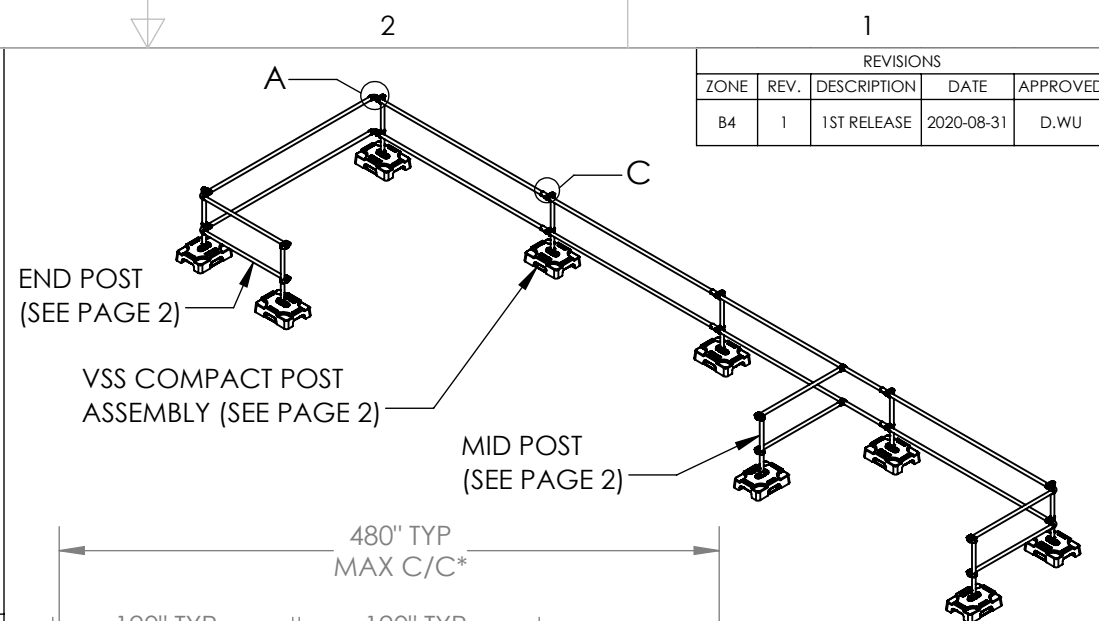
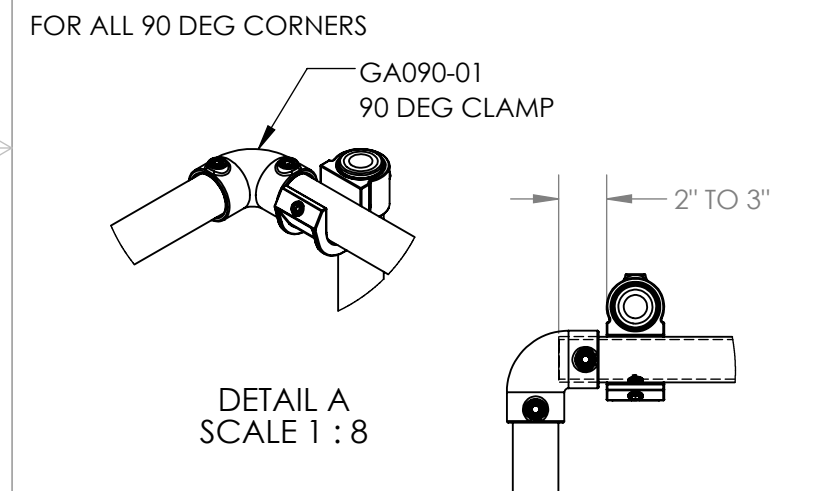
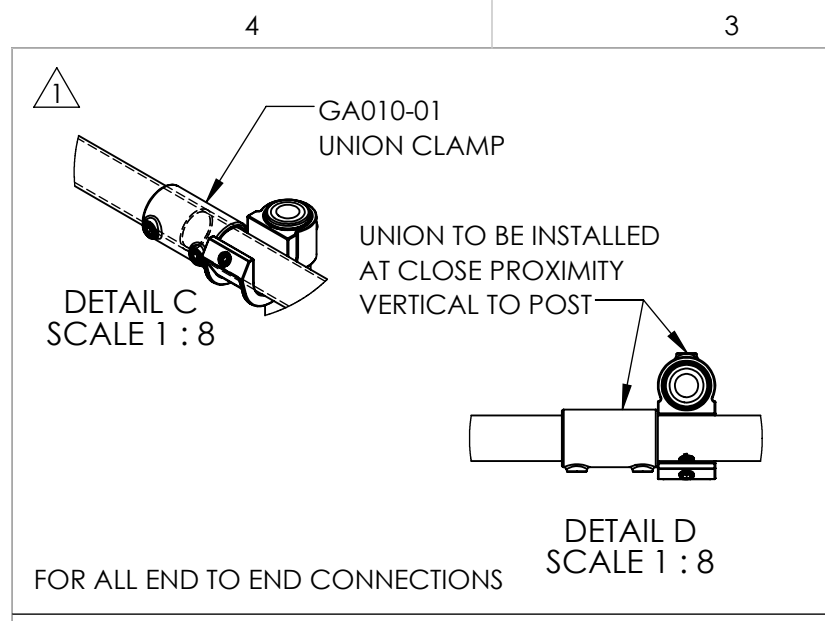


REVISIONS				
ZONE	REV.	DESCRIPTION	DATE	APPROVED
B4	1	1ST RELEASE	2020-08-31	D.WU



<p>THIRD ANGLE PROJECTION</p> <p>ALL DIMENSIONS ARE IN INCH TOUTES LES DIMENSIONS SONT EN POUCE</p> <p>UNLESS OTHERWISE NOTED SAUF INDICATION CONTRAIRE</p> <p>TOLERANCES/TOLÉRANCES:</p> <table border="0"> <tr> <td>DIM.</td> <td>ANG.</td> </tr> <tr> <td>X.X ±0.060"</td> <td>X ±3.00°</td> </tr> <tr> <td>X.XX ±0.030"</td> <td>X.X ±1.00°</td> </tr> <tr> <td>X.XXX ±0.015"</td> <td>X.XX ±0.50°</td> </tr> </table> <p>MACHINED SURFACE FINISH/FINI DE SURFACE MACHINÉ: Ra : 125 µin</p>	DIM.	ANG.	X.X ±0.060"	X ±3.00°	X.XX ±0.030"	X.X ±1.00°	X.XXX ±0.015"	X.XX ±0.50°	MATERIAL/MATERIEL: N/A	3D FILE NAME/NOM DE FICHER 3D: TYPICAL DETAIL DRAWINGS B - VSS COMPACT_REV.1	
	DIM.	ANG.									
X.X ±0.060"	X ±3.00°										
X.XX ±0.030"	X.X ±1.00°										
X.XXX ±0.015"	X.XX ±0.50°										
VOLUME/VOLUME: N/A	PAINTED/PEINTURE: N/A	<p>TITLE/TITRE: TYPICAL DETAIL DRAWINGS</p>									
EST WEIGHT/POIDS EST: 1148.296 POUNDS	DRAWN BY/ DESSINÉ PAR: D.WU			PART NUMBER/NUMÉRO DE PIÈCE: VSS COMPACT	REV: 1						
CHECKED BY/VÉRIFIÉ PAR: D.WU	SIZE/FORMAT: A	SCALE/ÉCHELLE: 1:96	SHEETS/FEUILLES: 1 OF/DE 2								



NOTES

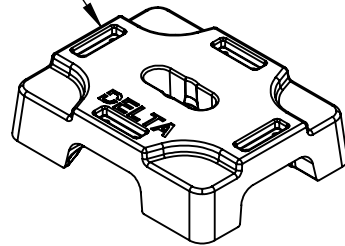
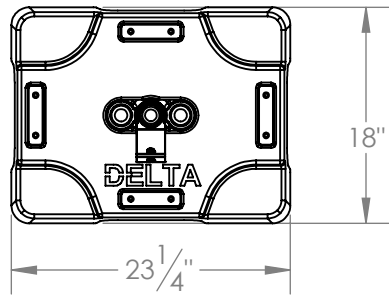
- ALL SET SCREWS ARE TO BE TORQUED TO 30LBS/FT UNLESS OTHERWISE SPECIFIED
- GUARDRAILS MUST BE INSTALLED 12" MIN FROM EDGE ON A PARAPET FREE ROOF.

VSS COMPACT POST ASSEMBLY

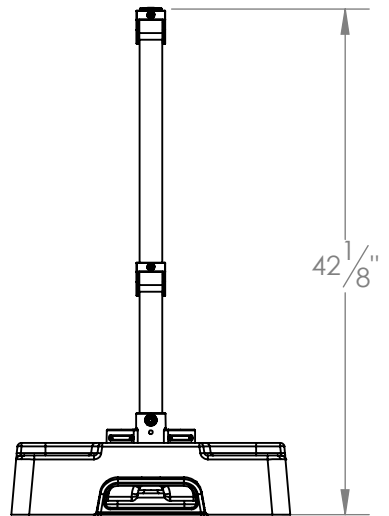
TORQUE TO 20LBS/FT

AAA02-01  
VERTICAL POST

BAA13-01  
DELTA RUBBER BASE



EAA05-01  
COMPACT KIT



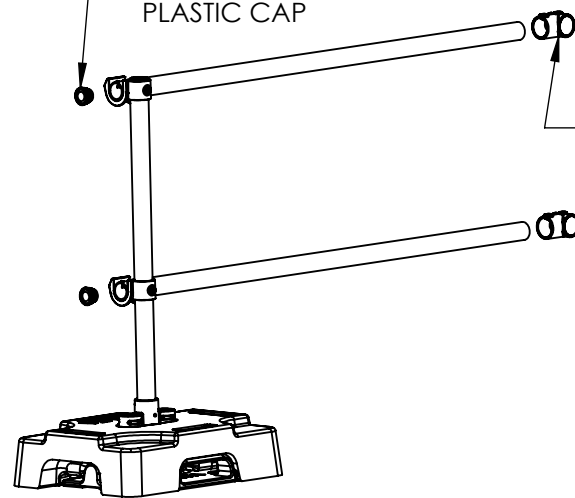
END RETURN ASSEMBLY

GA090-01  
90 DEG CLAMP

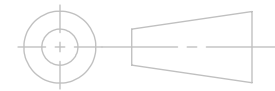
BAA12-01  
PLASTIC CAP

BAA12-01  
PLASTIC CAP

GA101-01  
T CLAMP



MID RETURN ASSEMBLY



THIRD ANGLE PROJECTION

ALL DIMENSIONS ARE IN INCH  
TOUTES LES DIMENSIONS SONT EN POUCE  
UNLESS OTHERWISE NOTED  
SAUF INDICATION CONTRAIRE

TOLERANCES/TOLÉRANCES:

DIM.	ANG.
X.X ±0.060"	X ±3.00°
X.XX ±0.030"	X.X ±1.00°
X.XXX ±0.015"	X.XX ±0.50°

MACHINED SURFACE FINISH/FINI DE SURFACE MACHINÉ:  
Ra : 125 µin

MATERIAL/MATERIEL:  
N/A

VOLUME/VOLUME:  
N/A

PAINTED/PEINTURÉ:  
N/A

EST WEIGHT/POIDS EST:  
1148.296 POUNDS

DRAWN BY/ DESSINÉ PAR:  
D.WU

CHECKED BY/VÉRIFIÉ PAR:  
D.WU

3D FILE NAME/NOM DE FICHER 3D:  
TYPICAL DETAIL DRAWINGS B - VSS COMPACT\_REV.1



TITLE/TITRE:  
TYPICAL DETAIL DRAWINGS

PART NUMBER/NUMÉRO DE PIÈCE:  
VSS COMPACT

REV:  
1

SIZE/FORMAT:  
A

SCALE/ÉCHELLE:  
1:16

SHEETS/FEUILLES:  
2 OF/DE 2