

8

7

6

5

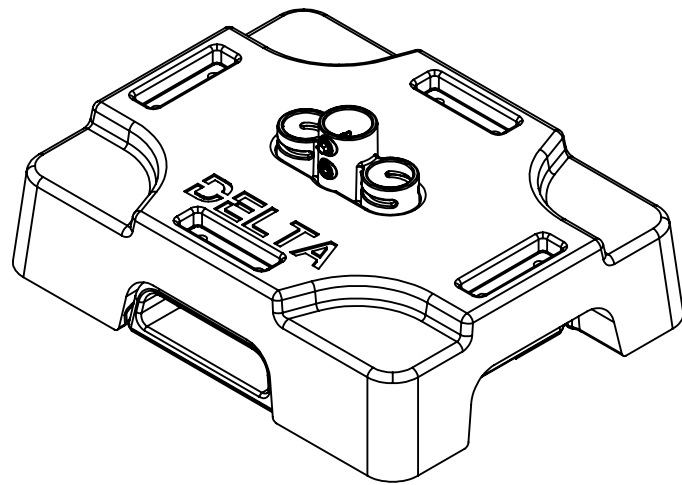
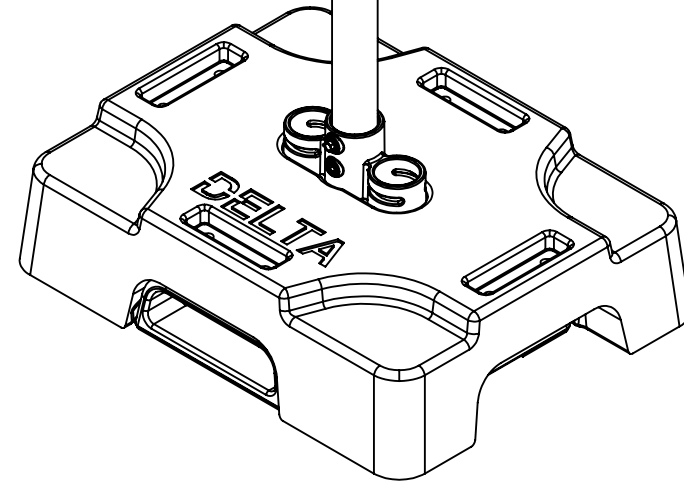
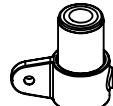
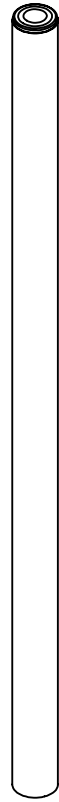
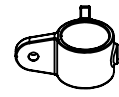
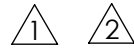
4

3

2

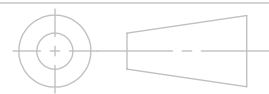
1

REVISIONS				
ZONE	REV.	DESCRIPTION	DATE	APPROVED
D8	1	1ST RELEASE	2019-10-31	D.WU
D8	2	UPDATED SHEET 1, 4 & 6	2020-01-10	D.WU



2.0
TOP OF AL TUBE
(NOT PLASTIC CAP)
TO TOP OF CLMAP
FOR ALL SAFETY LINE CLAMPS

40.0



THIRD ANGLE PROJECTION

ALL DIMENSIONS ARE IN INCH
TOUTES LES DIMENSIONS SONT EN POUCE
UNLES OTHERWISE NOTED
SAUF INDICATION CONTRAIRE
TOLERANCES/TOLÉRANCES:

DIM.	ANG.
X.X ±0.060"	X ±3.00°
X.XX ±0.030"	X.X ±1.00°
X.XXX ±0.015"	X.XX ±0.50°

MACHINED SURFACE FINISH/FINI DE SURFACE MACHINÉ:
Ra : 125 µin

MATERIAL/MATÉRIEL:

N/A

VOLUME/VOLUME:

N/A

PAINTED/PEINTURÉ:

-

EST WEIGHT/POIDS EST:

109.519 POUNDS

DRAWN BY/ DESSINÉ PAR:

CHECKED BY/VÉRIFIÉ PAR:

3D FILE NAME/NOM DE FICHER 3D:

CKIT_REV.3 ASSEMBLY INSTRUCTIONS_REV.2

DELTA

TITLE/TITRE:

PART NUMBER/NUMÉRO DE PIÈCE:

CORNER LINE CLAMP 90 DEG

REV:

SIZE/FORMAT:

B

SCALE/ÉCHELLE:

1:12

SHEETS/FEUILLES:

1 OF/DE 5

8

7

6

5

4

3

2

1

8

7

6

5



4

3

2

1

D

D

C

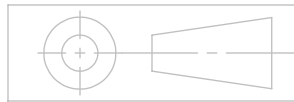
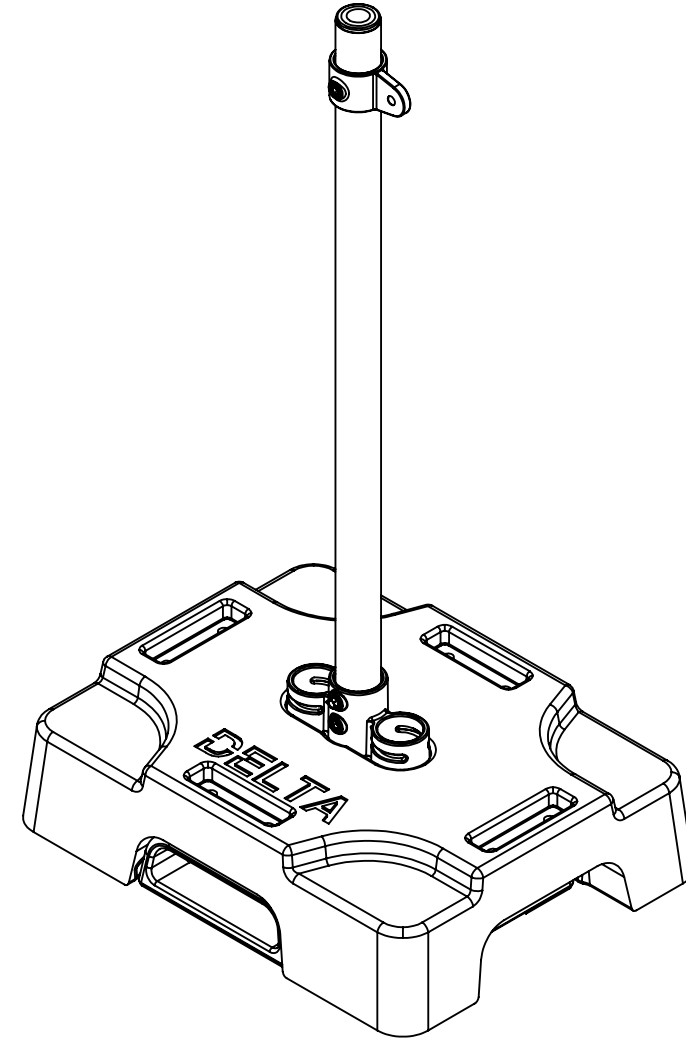
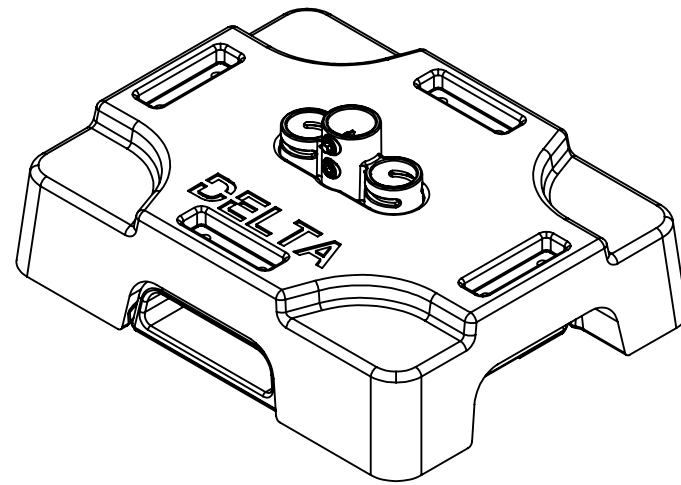
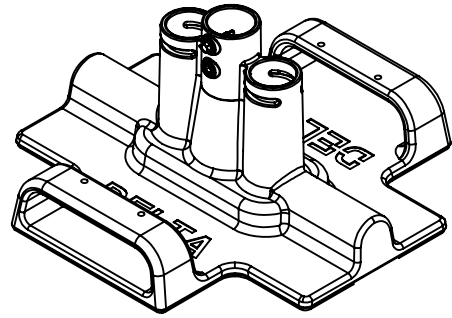
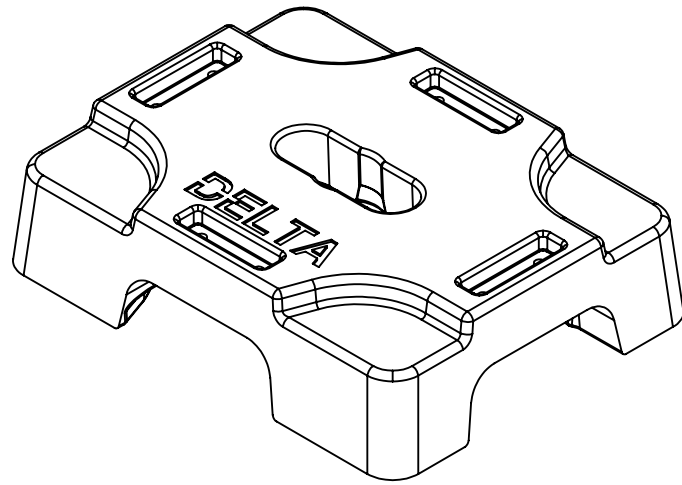
C

B

B

A

A



THIRD ANGLE PROJECTION

ALL DIMENSIONS ARE IN INCH
TOUTES LES DIMENSIONS SONT EN POUCE

UNLESS OTHERWISE NOTED
SAUF INDICATION CONTRAIRE

TOLERANCES/TOLÉRANCES:

DIM.	ANG.
X.X ±0.060"	X ±3.00°
X.XX ±0.030"	X.X ±1.00°
X.XXX ±0.015"	X.XX ±0.50°

MACHINED SURFACE FINISH/FINI DE SURFACE MACHINÉ:
Ra : 125 µin

MATERIAL/MATÉRIEL:

N/A

VOLUME/VOLUME:

N/A

PAINTED/PEINTURÉ:

-

EST WEIGHT/POIDS EST:

109.519 POUNDS

DRAWN BY/ DESSINÉ PAR:

CHECKED BY/VÉRIFIÉ PAR:

3D FILE NAME/NOM DE FICHER 3D:

CKIT_REV.3 ASSEMBLY INSTRUCTIONS_REV.2

TITLE/TITRE:

PART NUMBER/NUMÉRO DE PIÈCE:

LINE CLAMP END

REV:

SIZE/FORMAT:

B

SCALE/ÉCHELLE:

1:12

SHEETS/FEUILLES:

2 OF/DE 5

8

7

6

5

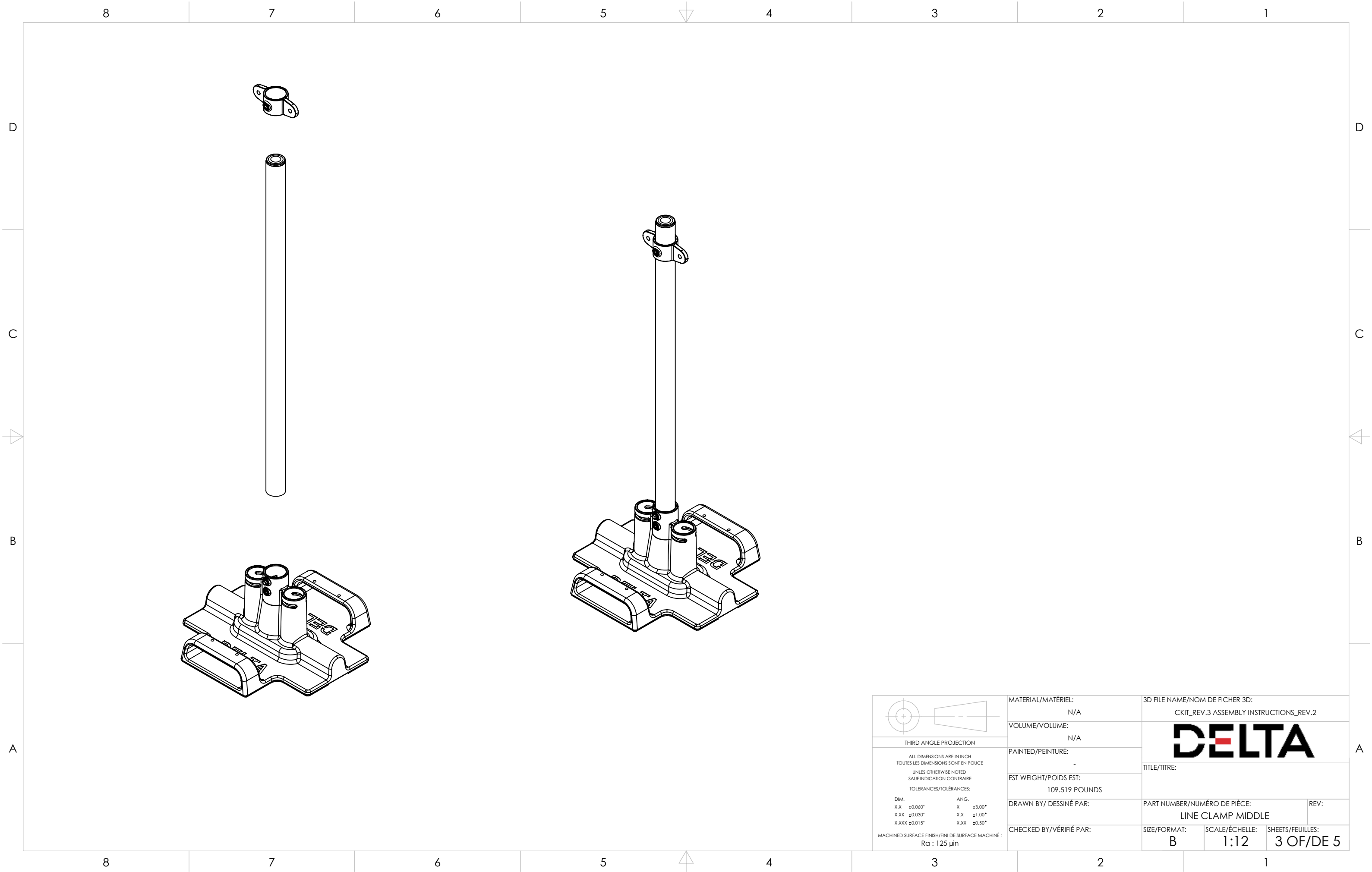


4

3

2

1



THIRD ANGLE PROJECTION

ALL DIMENSIONS ARE IN INCH
TOUTES LES DIMENSIONS SONT EN POUCE

UNLES OTHERWISE NOTED
SAUF INDICATION CONTRAIRE

TOLERANCES/TOLÉRANCES:

DIM.	ANG.
X.X ±0.060"	X ±3.00°
X.XX ±0.030"	X.X ±1.00°
X.XXX ±0.015"	X.XX ±0.50°

MACHINED SURFACE FINISH/FINI DE SURFACE MACHINÉ:
Ra : 125 µin

MATERIAL/MATÉRIEL:
N/A

VOLUME/VOLUME:
N/A

PAINTED/PEINTURE:
-

EST WEIGHT/POIDS EST:
109.519 POUNDS

DRAWN BY/ DESSINÉ PAR:

CHECKED BY/VÉRIFIÉ PAR:

3D FILE NAME/NOM DE FICHER 3D:
CKIT_REV.3 ASSEMBLY INSTRUCTIONS_REV.2

DELTA

TITLE/TITRE:

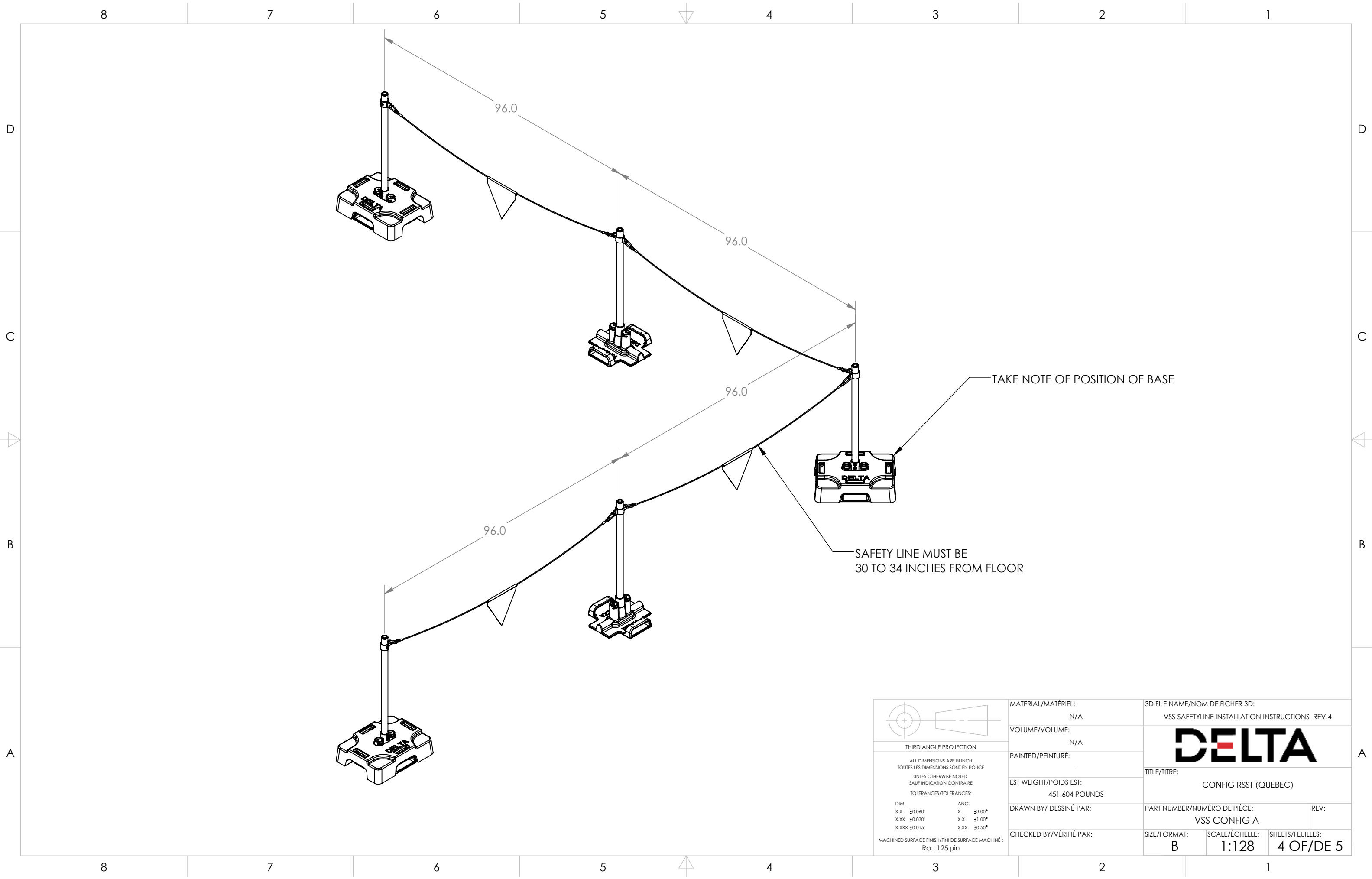
PART NUMBER/NUMÉRO DE PIÈCE:
LINE CLAMP MIDDLE

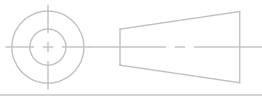

REV:

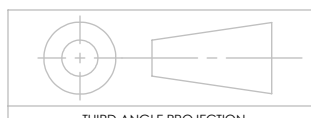
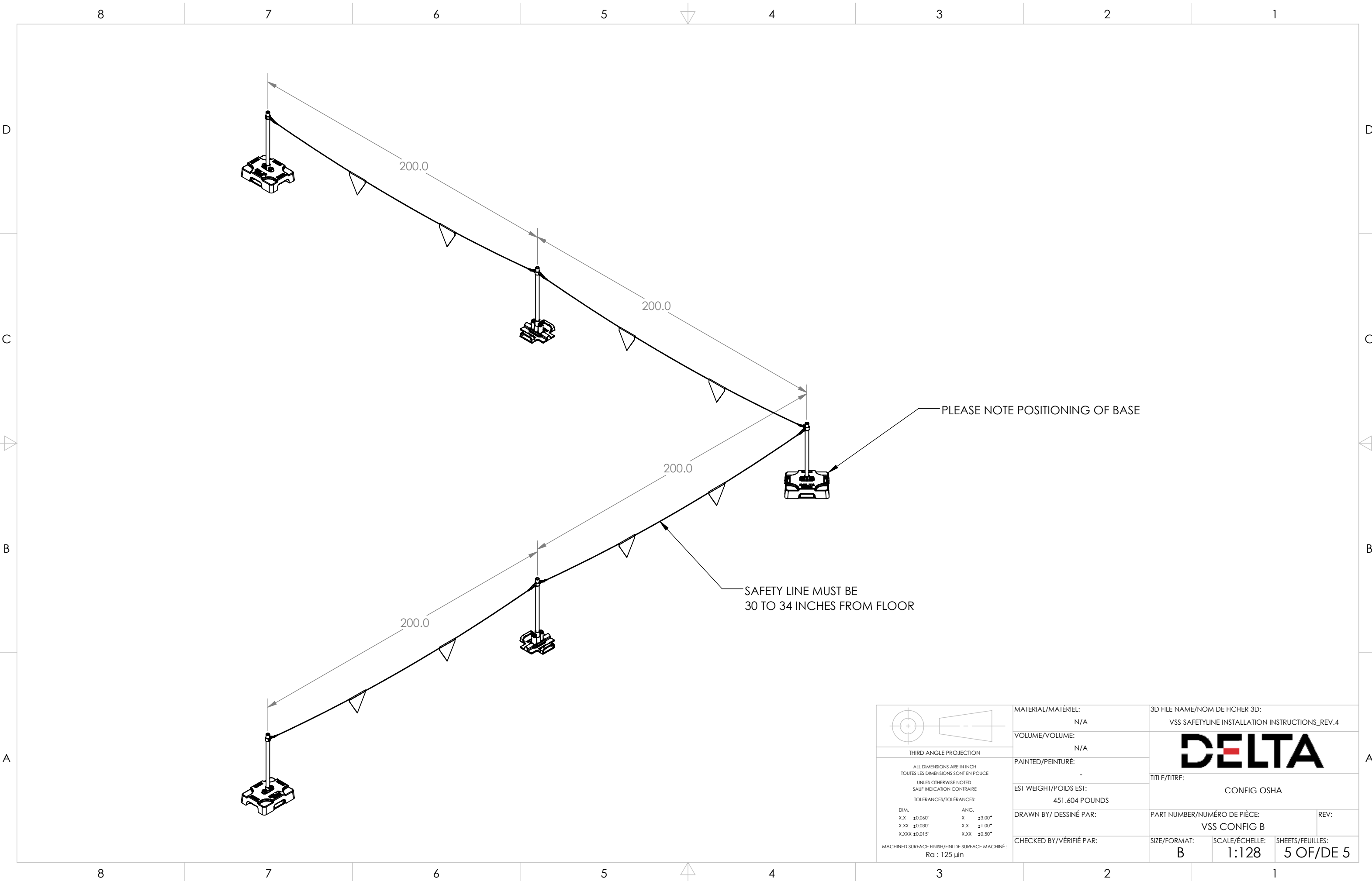
SIZE/FORMAT: **B**

SCALE/ÉCHELLE: **1:12**

SHEETS/FEUILLES: **3 OF/DE 5**



 <p>THIRD ANGLE PROJECTION</p> <p>ALL DIMENSIONS ARE IN INCH TOUTES LES DIMENSIONS SONT EN POUCE</p> <p>UNLES OTHERWISE NOTED SAUF INDICATION CONTRAIRE</p> <p>TOLERANCES/TOLÉRANCES:</p> <table border="0"> <tr> <td>DIM.</td> <td>ANG.</td> </tr> <tr> <td>X.X ±0.060"</td> <td>X ±3.00°</td> </tr> <tr> <td>X.XX ±0.030"</td> <td>X.X ±1.00°</td> </tr> <tr> <td>X.XXX ±0.015"</td> <td>X.XX ±0.50°</td> </tr> </table> <p>MACHINED SURFACE FINISH/FINI DE SURFACE MACHINÉ: Ra : 125 µin</p>	DIM.	ANG.	X.X ±0.060"	X ±3.00°	X.XX ±0.030"	X.X ±1.00°	X.XXX ±0.015"	X.XX ±0.50°	MATERIAL/MATÉRIEL: N/A VOLUME/VOLUME: N/A PAINTED/PEINTURÉ: - EST WEIGHT/POIDS EST: 451.604 POUNDS DRAWN BY/ DESSINÉ PAR: CHECKED BY/VÉRIFIÉ PAR:	3D FILE NAME/NOM DE FICHER 3D: VSS SAFETYLINE INSTALLATION INSTRUCTIONS_REV.4  TITLE/TITRE: CONFIG RSST (QUEBEC) PART NUMBER/NUMÉRO DE PIÈCE: VSS CONFIG A REV:
	DIM.	ANG.								
X.X ±0.060"	X ±3.00°									
X.XX ±0.030"	X.X ±1.00°									
X.XXX ±0.015"	X.XX ±0.50°									
SIZE/FORMAT: B SCALE/ÉCHELLE: 1:128 SHEETS/FEUILLES: 4 OF/DE 5										



THIRD ANGLE PROJECTION

ALL DIMENSIONS ARE IN INCH
TOUTES LES DIMENSIONS SONT EN POUCE

UNLES OTHERWISE NOTED
SAUF INDICATION CONTRAIRE

TOLERANCES/TOLÉRANCES:

DIM.	ANG.
X.X ±0.060"	X ±3.00°
X.XX ±0.030"	X.X ±1.00°
X.XXX ±0.015"	X.XX ±0.50°

MACHINED SURFACE FINISH/FINI DE SURFACE MACHINÉ:
Ra : 125 µin

MATERIAL/MATÉRIEL:
N/A

VOLUME/VOLUME:
N/A

PAINTED/PEINTURÉ:
-

EST WEIGHT/POIDS EST:
451.604 POUNDS

DRAWN BY/ DESSINÉ PAR:

CHECKED BY/VÉRIFIÉ PAR:

3D FILE NAME/NOM DE FICHER 3D:
VSS SAFETYLINE INSTALLATION INSTRUCTIONS_REV.4

DELTA

TITLE/TITRE:
CONFIG OSHA

PART NUMBER/NUMÉRO DE PIÈCE:
VSS CONFIG B

REV:

SIZE/FORMAT:
B

SCALE/ÉCHELLE:
1:128

SHEETS/FEUILLES:
5 OF/DE 5